

# PARTS LIST FOR DX450 Red-D-Arc

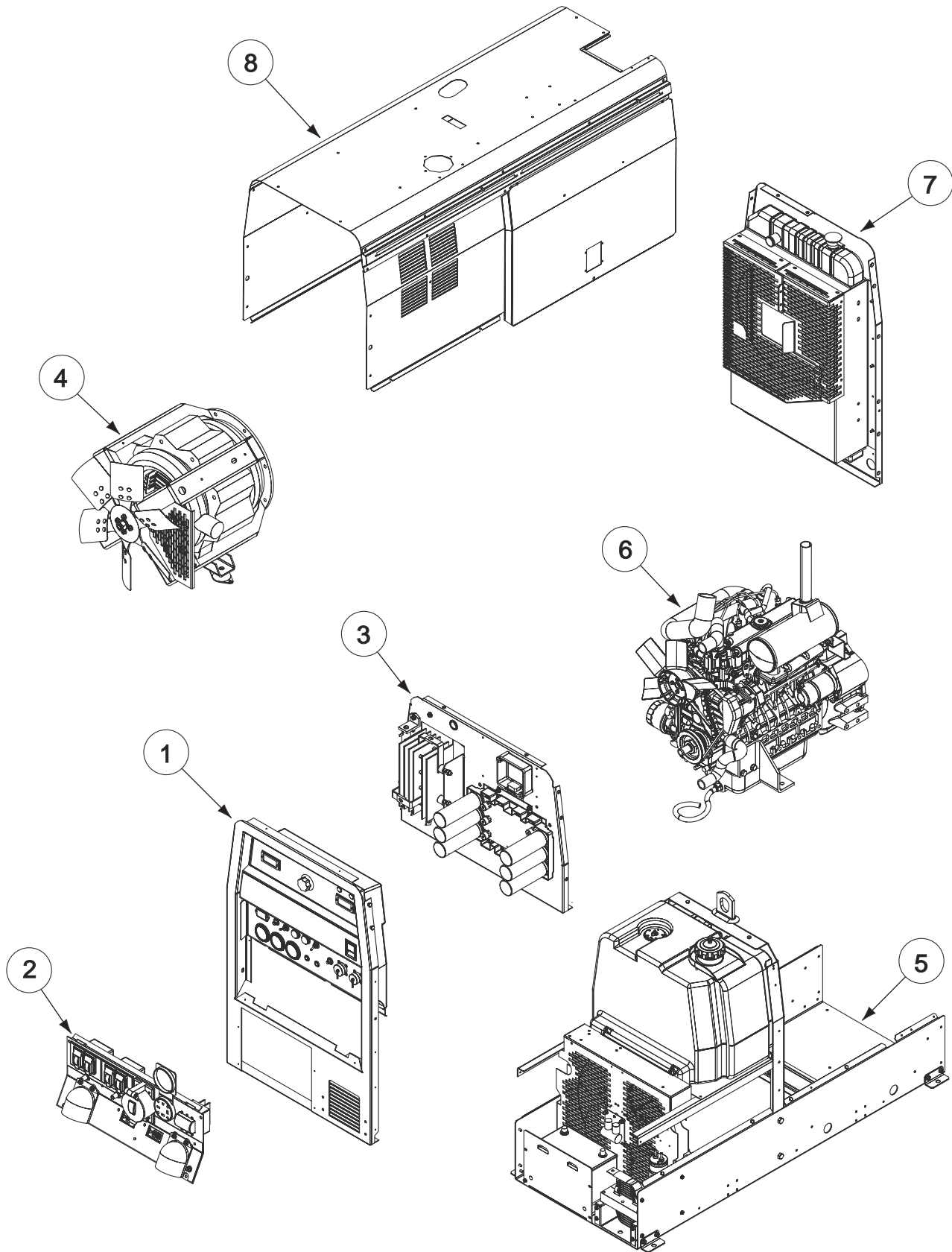
## Red-D-Arc Welderentals®

DX450 RED-D-ARC

Red-D-Arc  
Welderentals.

Index of Sub Assemblies  
Illustration of Sub Assemblies  
Index of Sub Assemblies  
Illustration of Sub Assemblies  
Index of Sub Assemblies  
Illustration of Sub Assemblies  
Index of Sub Assemblies  
Illustration of Sub Assemblies

# ILLUSTRATION OF SUB-ASSEMBLIES



Index of Sub Assemblies



# OPTIONAL EQUIPMENT LISTING

Miscellaneous Options Available for your machine are listed below:

# Indicates a change this printing.

DESCRIPTION .....	PART NUMBER
-------------------	-------------

- |   |                 |
|---|-----------------|
| Accessory Package .....                 | Order K704      |
| Spark Arrestor .....                    | Order K899-1    |
| 50 Amp, 240V Power Plug (3-Phase) ..... | Order T12153-10 |
| 2 Wheel Trailer .....                   | Order K2636-1   |
| Fender & Light Kit .....                | Order K2639-1   |
| Cable Storage Rack .....                | Order K2640-1   |
| Air Cleaner Service Indicator Kit ..... | Order K1858-1   |
| 4 Wheel Yard Trailer .....              | Order K2641-2   |
| Cold Weather Kit .....                  | Order K2735-1   |

Index of Sub Assemblies

# NOTES

---

Index of Sub Assemblies

Index of Sub Assemblies

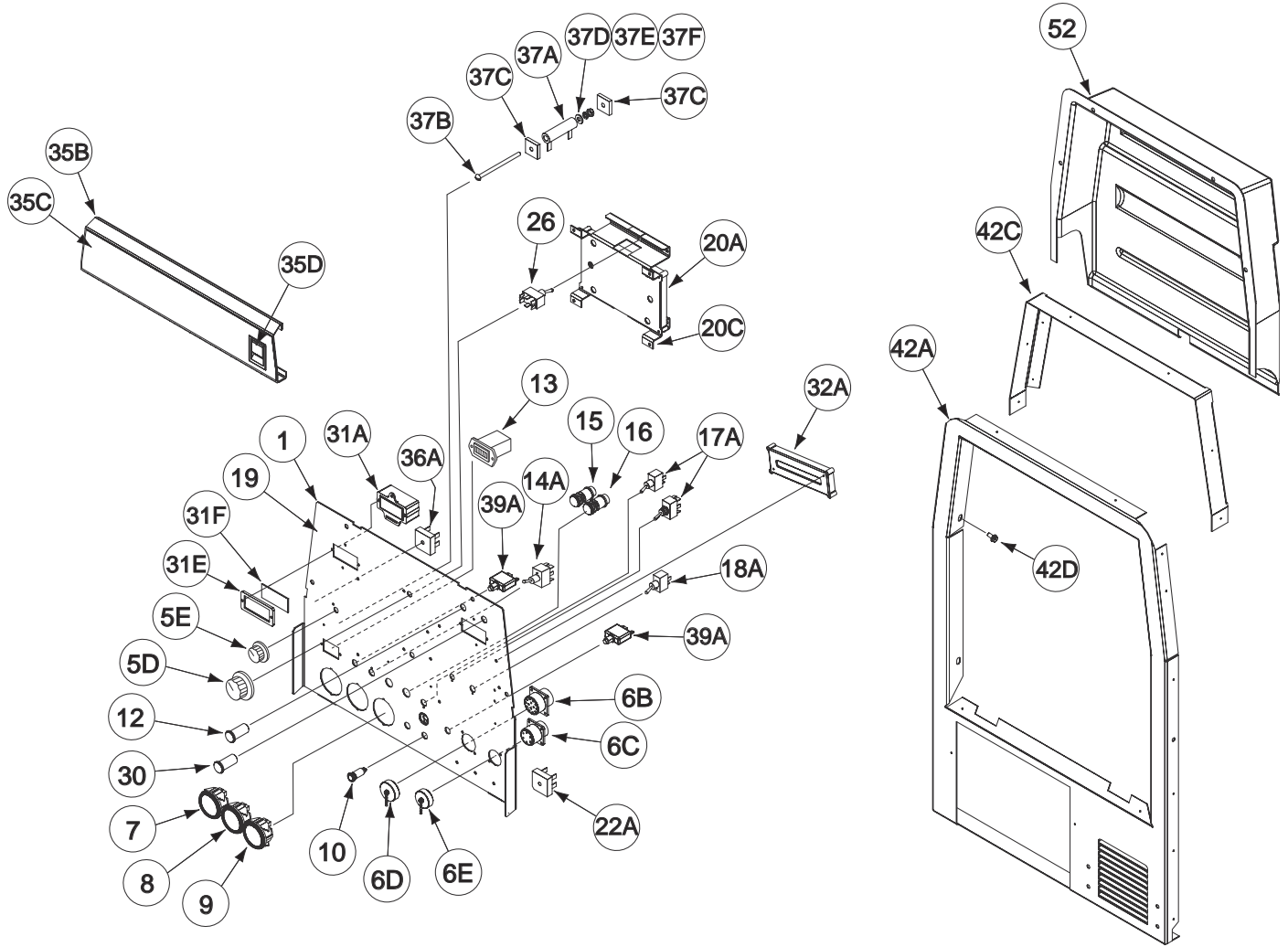
Index of Sub Assemblies

Index of Sub Assemblies

**DX450 RED-D-ARC**

**Red-D-Arc  
Weiderentals.**

# Case Front & Control Panel Assembly



Index of Sub Assemblies

Part Numbers

Index of Sub Assemblies

Part Numbers

Index of Sub Assemblies

Part Numbers

Index of Sub Assemblies

Part Numbers

# Indicates a change this printing.

Use only the parts marked "x" in the column under the heading number called for in the model index page.

ITEM	DESCRIPTION	PART NO.	QTY.	1	2	3	4	5	6	7	8	9
1	Control Panel Asbly, Includes: Control Panel	G4982-16 G4867-2	1 1	X X								
2	Plain Washer (Not Shown)	S9262-27	2	X								
3	#10-24 HN (Not Shown)	CF000010	4	X								
4	Lock Washer (Not Shown)	E106A-1	2	X								
5	Connector & Lead Asbly (Not Shown)	M19685-17	1	X								
5D	Knob	T10491-1	1	X								
5E	Knob	T10491	2	X								
5F	"O" Ring (Not Shown)	T13483-7	3	X								
6A	Connector & Lead Asbly (Not Shown), Includes:	M19685-20	1	X								
6B	Connector Receptacle	S12021-70	1	X								
6C	Connector Receptacle	S12021-62	1	X								
6D	Cap-Cable Connector	S17062-6	1	X								
6E	Cap-Cable Connector	S17062-11	1	X								
6F	Pan Head Screw (Not Shown)	S8025-96	8	X								
7	Fuel Gauge	S17585-1	1	X								
8	Temperature Gauge	S25154	1	X								
8A	#10-32 HN (Not Shown)	CF000011	6	X								#
9	Oil Pressure Gauge	S20206	1	X								
9A	#10-32 HN (Not Shown)	CF000011	6	X								#
10	Pilot Light - (Yellow)	T13534-11	1	X								
11A	Catch Bracket (Not Shown)	S24659	1	X								
11B	Self Tapping Screw (Not Shown)	S8025-98	2	X								
12	Pilot Light - (Green)	S24691	1	X								
13	Hour Meter - Miniature	S17475-3	1	X								
14A	Switch - Toggle, DPDT	T10800-36	1	X								
14B	Sealing Boot (Not Shown)	S22061-4	1	X								
15	Switch, Pushbutton	S13146-4	1	X								
16	Start Button	S13146-1	1	X								
17A	Switch, Toggle, SPST	T10800-38	2	X								
17B	Sealing Boot (Not Shown)	S22061-4	2	X								
18A	Toggle Switch	T10800-39	1	X								
18B	Sealing Boot (Not Shown)	S22061-4	1	X								
19	Upper Nameplate (G6270-1) (Part of G6270)	<b>NSS</b>	1	X								
20A	Weld Control PC Bd Assembly	G5507-[ ]	1	X								
20B	Self Tapping Screw (Not Shown)	S8025-100	4	X								
20C	P.C. Board Mounting Bracket	L11924-1	1	X								
20D	#10-24 HLN (Not Shown)	T9187-13	4	X								
21	Wiring Harness (Not Shown)	G6304	1	X								
22A	Diode Bridge	T13637-6	1	X								
22B	Insulating Washer (Not Shown)	S10773-7	1	X								
22C	Plain Washer (Not Shown)	S9262-3	1	X								
22D	Lock Washer (Not Shown)	E106A-1	1	X								
22E	#10-24 HN (Not Shown)	CF000010	1	X								
25	Button Plug (Not Shown)	T14659-1	1	X								
26	Switch	T10800-39	1	X								
30	Pilot Light (Red)	T13534-3	1	X								
31A	Meter Housing Assembly	L11160	2	X								
31B	Meter Housing Seal (Not Shown)	S24630	2	X								
31C	Plain Washer (Not Shown)	S9262-3	4	X								
31D	#6-32 HN (Not Shown)	CF000005	4	X								

Index of Sub Assemblies  
 Sub Assembly Illustration  
 Index of Sub Assemblies  
 Sub Assembly Illustration  
 Index of Sub Assemblies  
 Sub Assembly Illustration  
 Index of Sub Assemblies  
 Sub Assembly Illustration

# Indicates a change this printing.

Use only the parts marked "x" in the column under the heading number called for in the model index page.

ITEM	DESCRIPTION	PART NO.	QTY.	1	2	3	4	5	6	7	8	9
31E	Meter Bezel	M19368	2	X								
31F	Lens	T14807-9	2	X								
31G	#4-40 x .375 SS-PPNHS (Not Shown)	CF000389	4	X								
32A	OCV Indicator PCB Asbly	G4407-[ ]	1	X								
32B	#10-24 HLN (Not Shown)	T9187-13	4	X								
33	VRD On/Off Decal (Not Shown) (G6270-5) (Part of G6270)	<b>NSS</b>	1	X								
34	Connector & Lead Asbly (Not Shown)	M19685-11	1	X								
35A	Door, Decal & Latch Assembly, Includes:	M21982	1	X								
35B	Drop Down Door Assembly	L12440	1	X								
35C	Decal (G6270-2) (Part of G6270)	<b>NSS</b>	1	X								
35D	Door Latch	S25569	1	X								
35E	Thread Forming Screw (Not Shown)	S9225-68	4	X								
36A	Diode Bridge	T13637-6	1	X								
36B	Insulating Washer (Not Shown)	S10773-7	1	X								
36C	Plain Washer (Not Shown)	S9262-3	1	X								
36D	Lock Washer (Not Shown)	E106A-1	1	X								
36E	#10-24 HN (Not Shown)	CF000010	1	X								
37A	Resistor	S10404-132	1	X								
37B	#10-24 x 3.00 RHS	CF000009	1	X								
37C	Insulating Washer	T4479-A	2	X								
37D	Plain Washer	S9262-27	1	X								
37E	Lock Washer	E106A-1	1	X								
37F	#10-24 HN	CF000010	1	X								
38	Relay (Supplied w/Engine) (Not Shown)	M21735-8	1	X								
39A	Circuit Breaker	T12287-20	2	X								
39B	Sealing Boot	S22061-3	2	X								
40	Thread Forming Screw (Not Shown)	S9225-68	4	X								
42A	Case Front	G4865	1	X								
42B	Thread Forming Screw (Not Shown)	S9225-68	4	X								
42C	Case Front Insert	G4870	1	X								
42D	Thread Forming Screw	S9225-68	6	X								
45	Instruction Tag (Not Shown)	M17238	1	X								
52	Shield	G6048	1	X								
53	Plug & Lead Assembly (Not Shown)	M21905	1	X								

Note: When ordering new printed circuit boards indicate the dash number [ ] of the "Old" board that is to be replaced. This will aid Lincoln in supplying the correct and latest board along with any necessary jumpers or adapters. The dash number brackets [ ] have purposely been left blank so as to eliminate errors, confusion and updates.

Index of Sub Assemblies  
 Sub Assembly Illustration  
 Index of Sub Assemblies  
 Sub Assembly Illustration  
 Index of Sub Assemblies  
 Sub Assembly Illustration  
 Index of Sub Assemblies  
 Sub Assembly Illustration



# NOTES

---

Index of Sub Assemblies

Index of Sub Assemblies

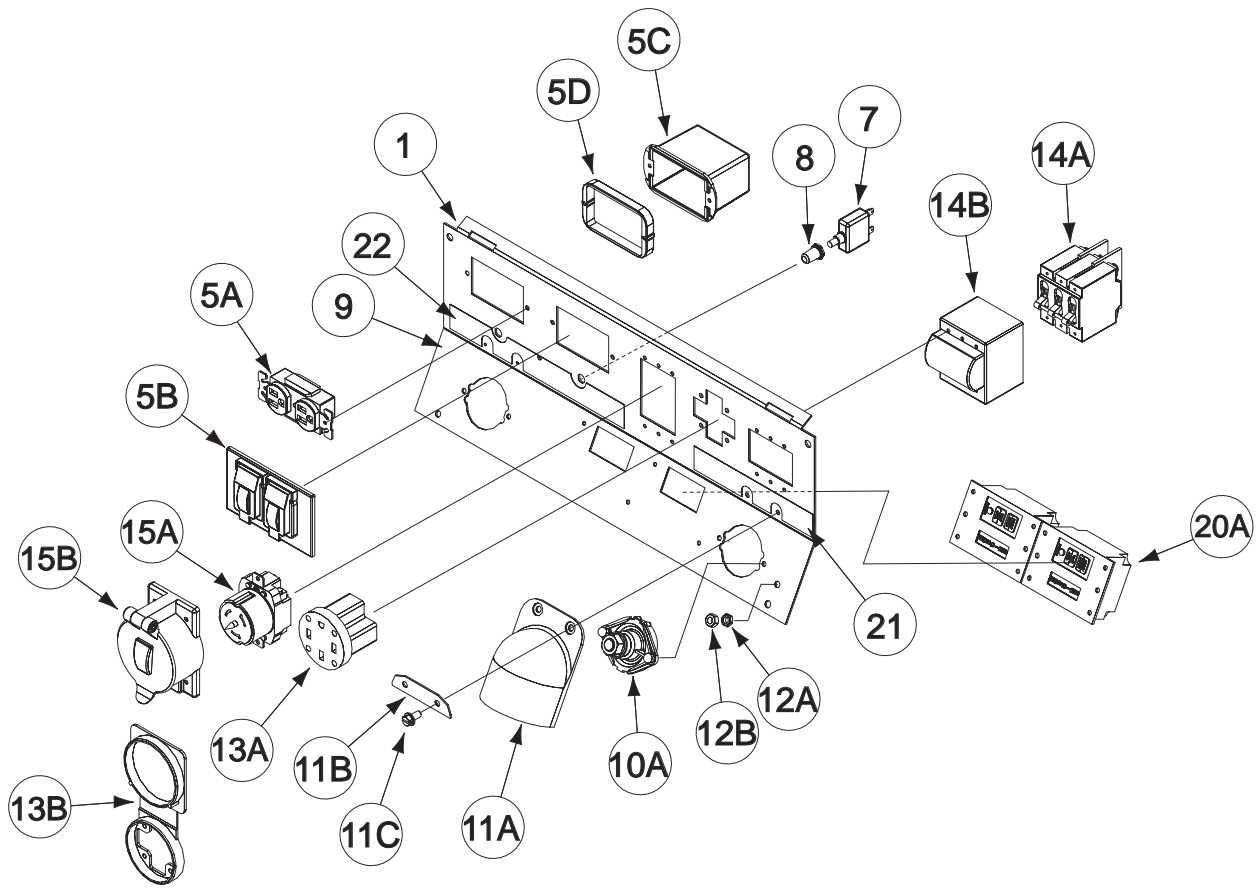
Index of Sub Assemblies

Index of Sub Assemblies

**DX450 RED-D-ARC**

**Red-D-Arc  
Weiderentals.**

# Output Panel Assembly



Index of Sub Assemblies

Part Numbers

Index of Sub Assemblies

Part Numbers

Index of Sub Assemblies

Part Numbers

Index of Sub Assemblies

Part Numbers

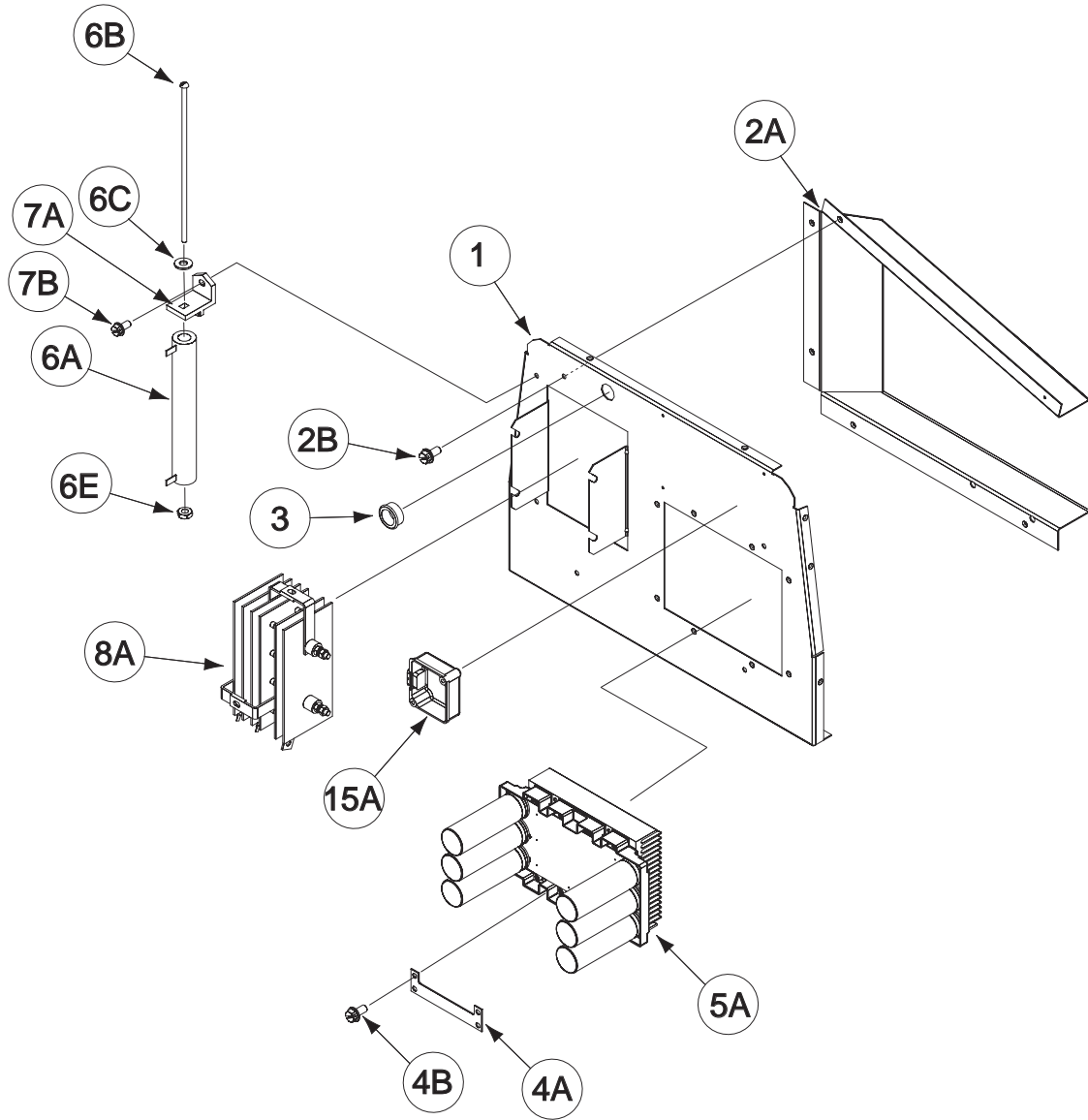
# Indicates a change this printing.

Use only the parts marked "x" in the column under the heading number called for in the model index page.

ITEM	DESCRIPTION	PART NO.	QTY.	1	2	3	4	5	6	7	8	9
1	Output Panel Assembly, Includes:	G4983-14	1	X	•							
1	Output Panel Assembly, Includes:	G4983-18	1	•	X							
1	Output Panel	G4866-6	1	X	•							
1	Output Panel	G4866-7	1	•	X							
2	Plain Washer (Not Shown)	S9262-27	2	X	X							
3	#10-24 HN (Not Shown)	CF000010	4	X	X							
4	Lock Washer (Not Shown)	E106A-1	2	X	X							
5A	Receptacle, Duplex	S11668-2	2	X	•							
5A	Receptacle, Duplex	S20184	2	•	X							
5B	Receptacle Cover	S27290	2	X	•							
5B	Receptacle Cover	M16996	2	•	X							
5C	GFCI Cover	L13286	2	X	X							
5D	Mounting Bracket	S27167	2	X	X							
5E	Thermo-Plastic Screw (Not Shown)	S24738-3	4	X	X							
5F	Receptacle Gasket	S21088	2	•	X							
7	Circuit Breaker (20 Amp)	T12287-38	2	X	X							
8	Sealing Boot (Not Shown)	S22061-2	2	X	X							
9	Rating Decal (G6270-3) (Part of G6270)	<b>NSS</b>	1	X	X							
10A	Output Stud, Includes:	M13900	2	X	X							
	Output Stud Nut	T3960	2	X	X							
10B	Self Tapping Screw (Not Shown)	S8025-91	4	X	X							
11A	Output Stud Cover	M20007	2	X	X							
11B	Output Stud Cover Plate	S25669	2	X	X							
11C	Thread Forming Screw	S9225-68	4	X	X							
12A	1/4-20 HLN	T9187-1	1	X	X							
12B	1/4-20 HN	CF000017	1	X	X							
13A	Receptacle, 240V, 3 Phase	S18907-3	1	X	X							
13B	Receptacle Cover	M18861	1	X	X							
13C	Lock Washer (Not Shown)	T9695-3	4	X	X							
13D	#8-32 HN (Not Shown)	CF000042	4	X	X							
14A	Circuit Breaker	M20586-1	1	X	X							
14B	Circuit Breaker Cover	S24911-4	1	X	X							
14C	Sems Screw (Not Shown)	T10082-30	6	X	X							
14D	Lock Washer (Not Shown)	T4291-A	6	X	X							
15A	Receptacle	S20229-4	1	X	X							
15B	Receptacle Cover	M21891	1	X	X							
15C	Lock Washer (Not Shown)	E106A-1	2	X	X							
15D	#10-24 HN (Not Shown)	CF000010	2	X	X							
15E	Self Tapping Screw (Not Shown)	S8025-97	4	X	X							
15F	Plain Washer (Not Shown)	S9262-27	2	X	X							
15G	Thread Forming Screw (Not Shown)	S9225-36	2	X	X							
20A	GFCI Module	M21586	2	X	X							
20B	Flat Washer (Not Shown)	S9262-3	4	X	X							
20C	Lock Washer (Not Shown)	T4291-A	4	X	X							
21	Aux & Circuit Breaker Decal (G6270-6) (Part of G6270)	<b>NSS</b>	1	X	X							
22	Aux & Circuit Breaker Decal (G6270-7) (Part of G6270)	<b>NSS</b>	1	X	X							
25	Thread Forming Screw (Not Shown)	S9225-68	4	X	X							
30	Shunt & Lead Asbly (Attaches to Output Stud) (Not Shown)	S24097-2	1	X	X							

Index of Sub Assemblies  
Sub Assembly Illustration  
Index of Sub Assemblies  
Sub Assembly Illustration  
Index of Sub Assemblies  
Sub Assembly Illustration  
Index of Sub Assemblies  
Sub Assembly Illustration

# Power Module Panel Assembly



Index of Sub Assemblies

Part Numbers

Index of Sub Assemblies

Part Numbers

Index of Sub Assemblies

Part Numbers

Index of Sub Assemblies

Part Numbers

# Indicates a change this printing.

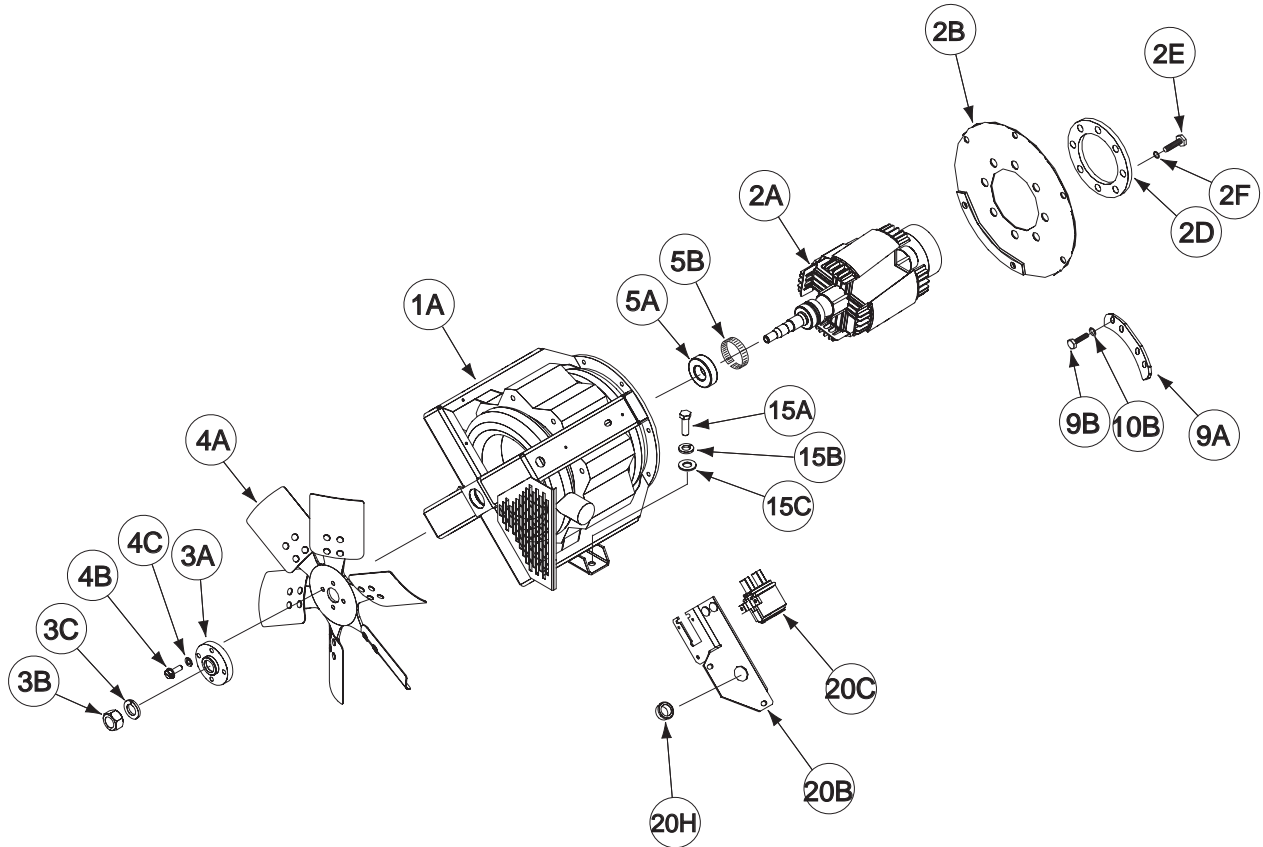
Use only the parts marked "x" in the column under the heading number called for in the model index page.

ITEM	DESCRIPTION	PART NO.	QTY.	1	2	3	4	5	6	7	8	9
1	Power Module Panel Assembly, Includes: Power Module Panel	G5011-1	1	X								
		G4930-1	1	X								
2A	Fuel Tank Front Panel	G4932-1	1	X								
2B	Thread Forming Screw	S9225-68	1	X								
3	Bushing	T12380-4	1	X								
4A	Chopper Bracket	S26006-1	2	X								
4B	Thread Forming Screw	S9225-68	4	X								
5A	Chopper Assembly	L12683-[ ]	1	X								
5B	Torx Button Head Screw (Not Shown)	S25930-6	4	X								
5C	Lock Washer (Not Shown)	E106A-2	4	X								
6A	Resistor	S10404-138	1	X								
6B	#10-24 x 7.50 RHS	CF000191	1	X								
6C	Plain Washer	S9262-27	2	X								
6D	Lock Washer (Not Shown)	E106A-1	1	X								
6E	#10-24 HN	CF000010	1	X								
7A	Heat Sink Holder	S22168	2	X								
7B	Thread Forming Screw	S9225-45	2	X								
8A	Rectifier	L11132-2	1	X								
8B	Plain Washer (Not Shown)	S9262-121	2	X								
8C	Lock Washer (Not Shown)	E106A-14	2	X								
10	Thread Forming Screw (Not Shown)	S9225-68	4	X								
15A	Engine Control Unit	M21735-3	1	X								
15B	#10-24 x 2.25 RHS (Not Shown)	CF000046	2	X								#
15C	Plain Washer (Not Shown)	S9262-27	4	X								#
15D	Lock Washer (Not Shown)	T9695-1	2	X								#
15E	#10-24 HN (Not Shown)	CF000010	2	X								#
15F	#10-24 HJN (Not Shown)	T9187-13	2	X								#

Note: When ordering new printed circuit boards indicate the dash number [ ] of the "Old" board that is to be replaced. This will aid Lincoln in supplying the correct and latest board along with any necessary jumpers or adapters. The dash number brackets [ ] have purposely been left blank so as to eliminate errors, confusion and updates.

Index of Sub Assemblies  
 Sub Assembly Illustration  
 Index of Sub Assemblies  
 Sub Assembly Illustration  
 Index of Sub Assemblies  
 Sub Assembly Illustration  
 Index of Sub Assemblies  
 Sub Assembly Illustration

# Generator & Rotor Assembly



# Indicates a change this printing.

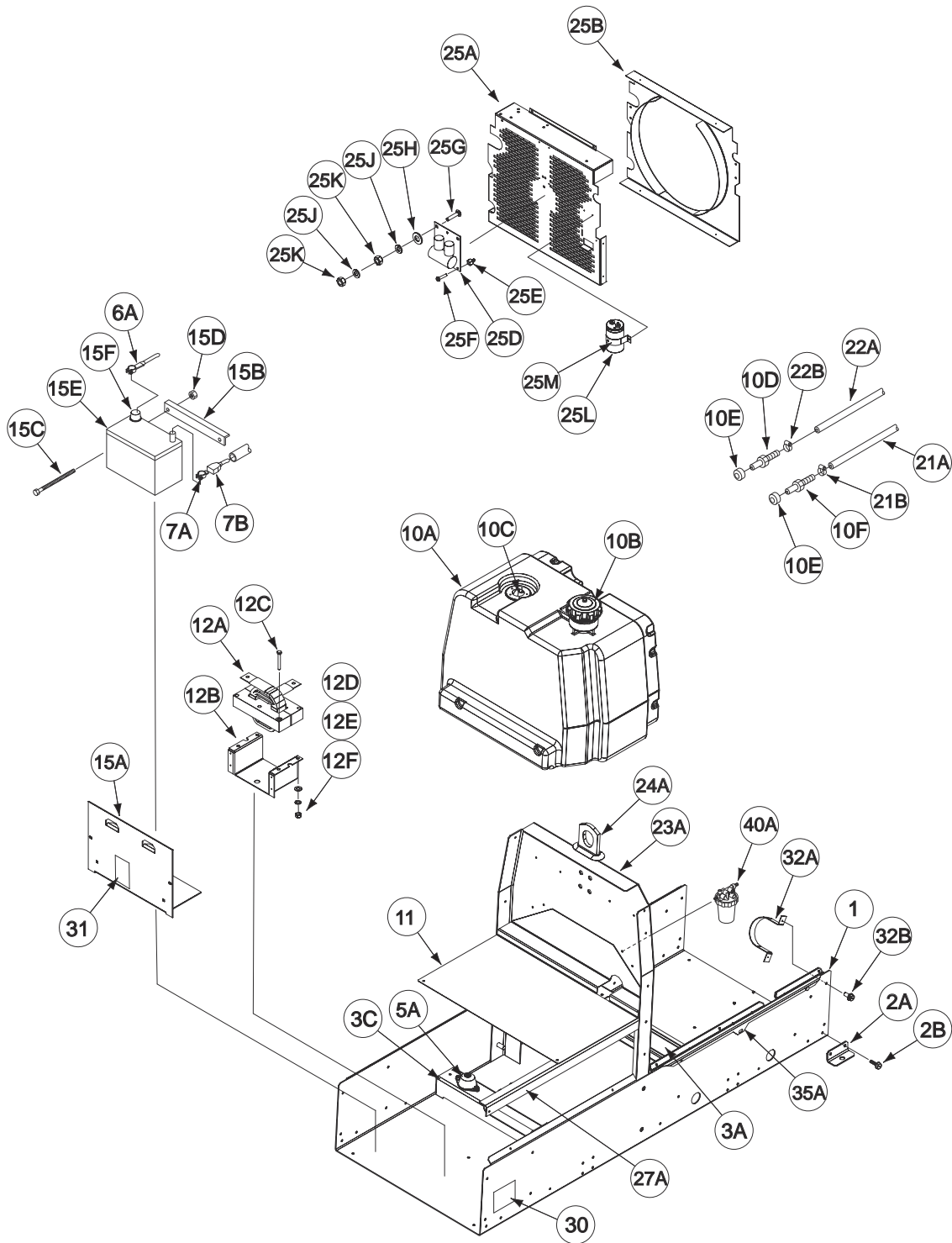
Use only the parts marked "x" in the column under the heading number called for in the model index page.

ITEM	DESCRIPTION	PART NO.	QTY.	1	2	3	4	5	6	7	8	9
1A	Generator Assembly (L10742-15), Includes: Stator Tie Bar Welded Assembly	<b>NSS</b> G3088-16	1 1	X X								
2	Rotor & Coupling Disc Asbly (L13110-3), Includes:	<b>NSS</b>	1	X								
2A	Rotor & Shaft Assembly	L10501-5	1	X								
2B	Coupling Disc	M19796	1	X								
2C	Coupling Disc Backing Plate (Not Shown)	S8042	2	X								
2D	Coupling Clamp Ring	S14233	1	X								
2E	7/16-14 x 1.50 HHCS	T8833-2	8	X								
2F	Lock Washer	E106A-8	8	X								
3A	Fan Couple	S22657	1	X								
3B	3/4-10 HN	CF000025	1	X								
3C	Lock Washer	E106A-7	1	X								
4A	Fan Blade	L9551	1	X								
4B	Thread Forming Screw	S9225-22	4	X								
4C	Lock Washer	E106A-14	4	X								
5A	Bearing	M9300-85	1	X								
5B	Tolerance Ring	S18044-5	1	X								
9A	Blower Segment	S11868-1	4	X								
9B	M10 x 1.5 x 25 SHCS	T14731-61	8	X								
9C	Lock Washer (Not Shown)	S17400-1	8	X								
10A	3/8-16 x 1.25 HHCS (Not Shown)	T8833-10	8	X								
10B	Lock Washer	E106A-16	8	X								
15A	3/8-16 x 1.25 HHCS	T8833-62	2	X								
15B	Lock Washer	E106A-16	2	X								
15C	Plain Washer	S9262-120	2	X								
20A	Brush Holder & Bracket Asbly, Includes:	M21315	1	X								
20B	Brush Holder Bracket	M18323	1	X								
20C	Brush Holder & Brush Holder Asbly, Includes:	M16158	1	X								
	Brush Holder Cartridge	G2114	1	X								
	Brush Assembly	S19480	2	X								
	Brush Assembly Retainer	M16157	1	X								
20G	Self Tapping Screw (Not Shown)	S8025-91	2	X								
20H	Bushing	T12380-4	1	X								
20J	Thread Forming Screw (Not Shown)	S9225-8	2	X								

#

Index of Sub Assemblies  
 Sub Assembly Illustration  
 Index of Sub Assemblies  
 Sub Assembly Illustration  
 Index of Sub Assemblies  
 Sub Assembly Illustration  
 Index of Sub Assemblies  
 Sub Assembly Illustration

# Base, Fuel Tank, Battery Assembly



DX450 RED-D-ARC

Red-D-Arc  
Weidentals.

05-19-2008

Index of Sub Assemblies

Part Numbers

Index of Sub Assemblies

Part Numbers

Index of Sub Assemblies

Part Numbers

Index of Sub Assemblies

Part Numbers



# Indicates a change this printing.

Use only the parts marked "x" in the column under the heading number called for in the model index page.

ITEM	DESCRIPTION	PART NO.	QTY.	1	2	3	4	5	6	7	8	9
1	Base	G4900-1	1	X								
2A	Mounting Bracket	M20610	4	X								
2B	Thread Forming Screw	S9225-64	8	X								
3A	Support (Engine)	L12454-2	1	X								
3B	Thread Forming Screw (8 per Support) (Not Shown)	S9225-68	16	X								
3C	Support (Stator)	L12454	1	X								
5A	Rubber Mount	T11991-3	4	X								
5B	Thread Forming Screw (Not Shown)	S9225-64	8	X								
6A	Battery Cable (Negative)	S8070-51	1	X								
7A	Battery Cable (Positive)	S8070-47	1	X								
7B	Battery Terminal Cover	S20191-1	1	X								
7C	M8 X 1.25 HN (Not Shown)	T14815-2	1	X								
9	Thread Forming Screw (Not Shown)	S9225-64	1	X								
	Fuel Tank Assembly, Includes:	G6071	1	X								
10A	Fuel Tank	<b>NSS</b>	1	X								
10B	Fuel Cap	S20541	1	X								
10C	Fuel Sender	L12505	1	X								
10D	Fuel Fitting	S19564-1	1	X								
10E	Rubber Plug	S19563	2	X								
10F	Fuel Fitting, (Return)	S19564-5	1	X								
11	Fuel Tank Tray	L13304	1	X								
12	Choke & Bracket Asbly, Includes:	M21314	1	X								
12A	Choke	M19416-2	1	X								
12B	Choke Bracket	M20547	1	X								
12C	5/16-18 x 2.75 HHCS	CF000187	2	X								
12D	Plain Washer	S9262-121	2	X								
12E	Lock Washer	E106A-14	2	X								
12F	5/16-18 HN	CF000029	2	X								
12G	Thread Forming Screw (Not Shown)	S9225-68	4	X								
15	Battery & Hold Down Asbly, Includes:	L8904-5	1	X								
15A	Battery Tray	M20535	1	X								
15B	Battery Bracket	S22018	1	X								
15C	Carriage Bolt	T11827-31	2	X								
15D	1/4-20 HLN	T9187-6	2	X								
15E	Battery (12V) (M9399-11)	<b>NSS</b>	1	X								
15F	Cap	T14654	1	X								
15G	Thread Forming Screw (Not Shown)	S9225-68	4	X								
21A	Fuel Line (Return)	T10642-276	1	X								
21B	Hose Clamp	S10888-35	2	X								
22A	Fuel Hose (Supply Tank to Water Separator)	T10642-107	1	X								#
22B	Hose Clamp	T13777-1	2	X								#
23A	Lift Bale Frame	G6084	1	X								
23B	1/2-13x1.25 HHCS (Not Shown)	T8833-24	4	X								
23C	Lock Washer (Not Shown)	E106A-15	4	X								
23D	1/2-13 HN (Not Shown)	CF000027	4	X								
24A	Lift Bale	S10227-61	1	X								
24B	1/2-13x1.25 HHCS (Not Shown)	T8833-24	4	X								
24C	Lock Washer (Not Shown)	E106A-15	4	X								
24D	1/2-13 HN (Not Shown)	CF000027	4	X								

Index of Sub Assemblies  
 Sub Assembly Illustration  
 Index of Sub Assemblies  
 Sub Assembly Illustration  
 Index of Sub Assemblies  
 Sub Assembly Illustration  
 Index of Sub Assemblies  
 Sub Assembly Illustration

# Indicates a change this printing.

Use only the parts marked "x" in the column under the heading number called for in the model index page.

ITEM	DESCRIPTION	PART NO.	QTY.	1	2	3	4	5	6	7	8	9
25	Stator Fan Guard & Shroud Assembly, Includes:	L13119	1	X								
25A	Stator Fan Guard	L12458-1	1	X								
25B	Stator Fan Shroud	L12485	1	X								
25C	Thread Forming Screw (Not Shown)	S9225-68	8	X								
25D	Bypass/Stabilizer P.C. Board Assembly	L10121-[ ]	1	X								
25E	Expansion Nut	S14020-3	3	X								
25F	Self Tapping Screw	S8025-97	3	X								
25G	1/4-20 x .75 HHCS	CF000014	2	X								
25H	Plain Washer	S9262-98	2	X								
25J	Lock Washer	E106A-2	2	X								
25K	1/4-20 HN	CF000017	2	X								
25L	Filter Capacitor	S13490-171A	1	X								
25M	Capacitor Bracket Assembly	S22747	1	X								
25N	Thread Forming Screw (Not Shown)	S9225-68	1	X								
25P	Set Screw (Not Shown)	S11604-65	2	X								
25Q	Output Stud Cover (Not Shown)	M20007	1	X								
25R	Output Stud Cover Plate (Not Shown)	S25669	1	X								
25S	Thread Forming Screw (Not Shown)	S9225-68	2	X								
25T	Thread Forming Screw (Not Shown)	S9225-68	4	X								
27A	Support Rail	L12457	2	X								
27B	Thread Forming Screw (Not Shown)	S9225-68	4	X								
30	Warning Decal	M16197	1	X								
31	Battery Warning Decal	S17851	1	X								
32A	Container Bracket	M20612	1	X								
32B	Thread Forming Screw	S9225-68	2	X								
33A	Coolant Overflow Bottle (Supplied w/Engine) (Not Shown)	M21735-17	1	X								
33B	Coolant Bottle Bracket (Not Shown)	S25514	1	X								
33C	Thread Forming Screw (Not Shown)	S9225-68	2	X								
35A	Side Panel	L12515-1	1	X								
35B	Thread Forming Screw (SS) (Not Shown)	S24739-27	3	X								
36	Door Bumper (Not Shown)	T14882-1	2	X								
40A	Fuel Sedimenter (Supplied w/Engine)	M21735-9	1	X								
40B	5/16-28 x 2.75 HHCS (Not Shown)	CF000073	1	X								
40C	Lock Washer (Not Shown)	E106A-14	1	X								
40D	5/16-18 HN (Not Shown)	CF000029	1	X								
40E	Water Separator Bracket (Not Shown)	S26066	1	X								
40F	Thread Forming Screw (Not Shown)	S9225-68	2	X								
40G	Hose Clamp (Not Shown)	S10888-35	1	X								
45	Engine Service Item Decal (Not Shown)	S27632	1	X								

#

Note: When ordering new printed circuit boards indicate the dash number [ ] of the "Old" board that is to be replaced. This will aid Lincoln in supplying the correct and latest board along with any necessary jumpers or adapters. The dash number brackets [ ] have purposely been left blank so as to eliminate errors, confusion and updates.

Index of Sub Assemblies  
Sub Assembly Illustration

# NOTES

---

Index of Sub Assemblies

Index of Sub Assemblies

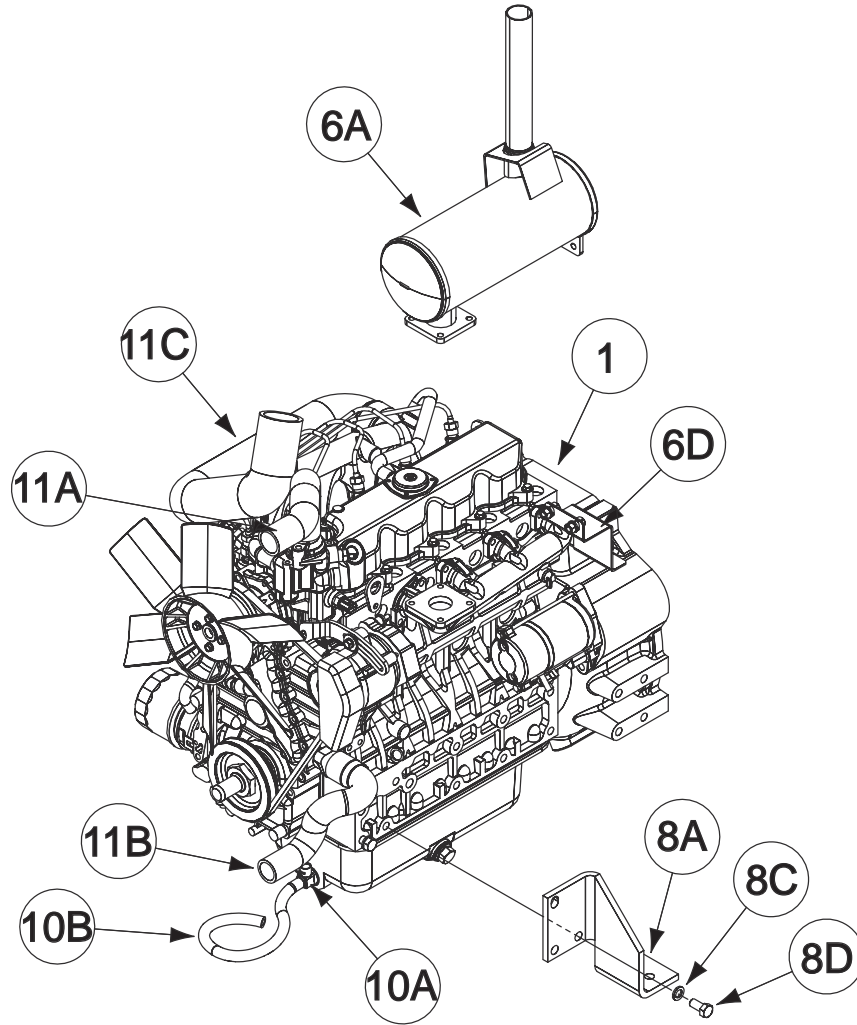
Index of Sub Assemblies

Index of Sub Assemblies

**DX450 RED-D-ARC**

**Red-D-Arc  
Weiderentals.**

# Engine Assembly



Index of Sub Assemblies  
Part Numbers  
Index of Sub Assemblies  
Part Numbers  
Index of Sub Assemblies  
Part Numbers  
Index of Sub Assemblies  
Part Numbers

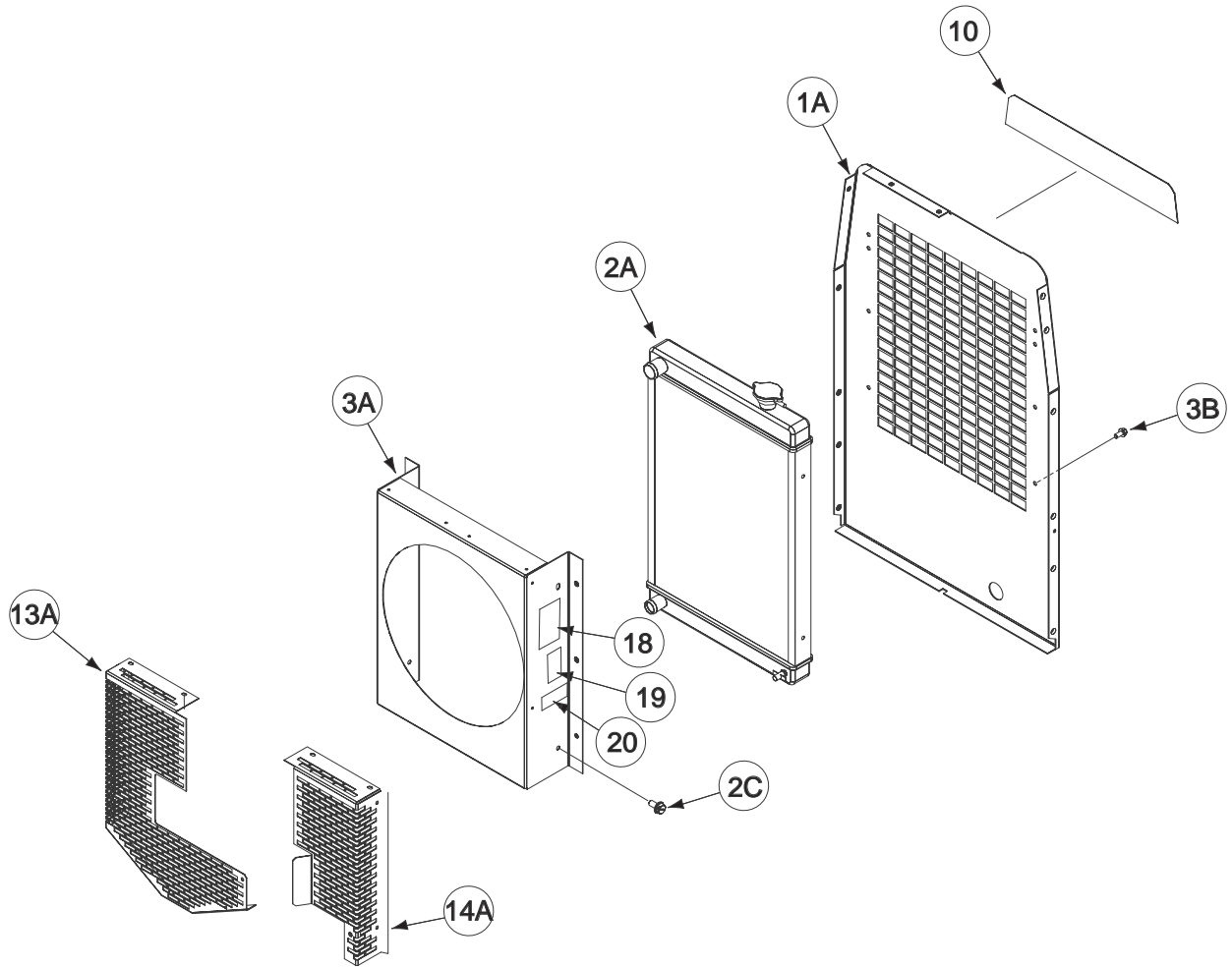
# Indicates a change this printing.

Use only the parts marked "x" in the column under the heading number called for in the model index page.

ITEM	DESCRIPTION	PART NO.	QTY.	1	2	3	4	5	6	7	8	9
1	Engine Assembly (L13830), Includes: Engine (Kubota)	<b>NSS</b> M21735	1 1	X X	X X							
2A	Oil Pressure Switch/Sender (Not Shown)	S17026-3	1	X	X							
2B	Pipe Adapter (Not Shown)	S25853-1	1	X	X							
2C	M4-0.7 HN (Not Shown)	T14815-6	2	X	X							
3A	Fuel Filter (Supplied w/Engine) (Not Shown)	M21735-6	1	X	X							
3B	Fuel Filter Bracket (Not Shown)	M21735-7	1	X	X							
3C	M10-1.25 x 25mm HHS w/Lock Washer (Not Shown)	M21735-10	2	X	X							
4A	Flex Tube (Separator to Fuel Filter) (Not Shown)	T10642-86	1	X	X							
4B	Hose Clamp (Not Shown)	T13777-1	2	X	X							
5A	Flex Tube (Fuel Filter to Pump) (Not Shown)	T10642-269	1	X	X							
5B	Hose Clamp (Not Shown)	T13777-1	1	X	X							
6A	Muffler	L12818	1	X	•							
6A	Muffler	L12818-1	1	•	X							#
6B	Gasket (Supplied w/Engine) (Not Shown)	M21735-1	1	X	X							
6C	M8-1.25 x 25mm HHS w/Lock Washer (Not Shown)	M21735-2	4	X	X							
6D	Muffler Support Bracket	M21750	1	X	X							
6E	3/8-16 x .75 HHCS (Not Shown)	CF000034	2	X	X							
6F	3/8-16 HN (Not Shown)	CF000067	2	X	X							
6G	Lock Washer (Not Shown)	E106A-16	2	X	X							
6H	1/2-13 x .75 HHCS (Not Shown)	CF000020	1	X	X							
6J	Plain Washer (Not Shown)	S9262-1	1	X	X							
6K	Lock Washer (Not Shown)	E106A-15	1	X	X							
7A	Temperature Sender (Not Shown)	S27248-1	1	X	X							
8A	Engine Mounting Foot (Left)	L13732-1	1	X	X							
8B	Engine Mounting Foot (Right) (Not Shown)	L13732-2	1	X	X							
8C	M12-1.25 x 35mm HHS	M21735-14	6	X	X							
8D	M12 Lock Washer	M21735-15	6	X	X							
10A	Oil Drain Valve	S23024-2	1	X	•							
10A	Adapter Fitting	S25362-4	1	•	X							
10B	Flex Hose	T10642-218	1	X	•							
10B	Flex Hose	T10642-264	1	•	X							
10C	Clamp (Not Shown)	S10888-27	1	X	•							
10C	Clamp (Not Shown)	S10888-27	2	•	X							#
10D	Adapter Fitting (Not Shown)	S25362-1	1	•	X							#
10E	Oil Drain Valve (Not Shown)	S24662	1	•	X							#
11A	Upper Radiator Hose	M21737	1	X	X							
11B	Lower Radiator Hose	M21738	1	X	X							
11C	Clamp	S1088-44	2	X	X							
11D	Air Intake Hose	L13762	1	X	X							
11E	Clamp (Not Shown)	S10888-33	3	X	X							
14A	Pressure Switch (Not Shown)	S11446	1	X	X							
14B	Pipe Adapter (Not Shown)	S25853-1	1	X	X							

Index of Sub Assemblies  
 Sub Assembly Illustration  
 Index of Sub Assemblies  
 Sub Assembly Illustration  
 Index of Sub Assemblies  
 Sub Assembly Illustration  
 Index of Sub Assemblies  
 Sub Assembly Illustration

# Case Back & Radiator Assembly



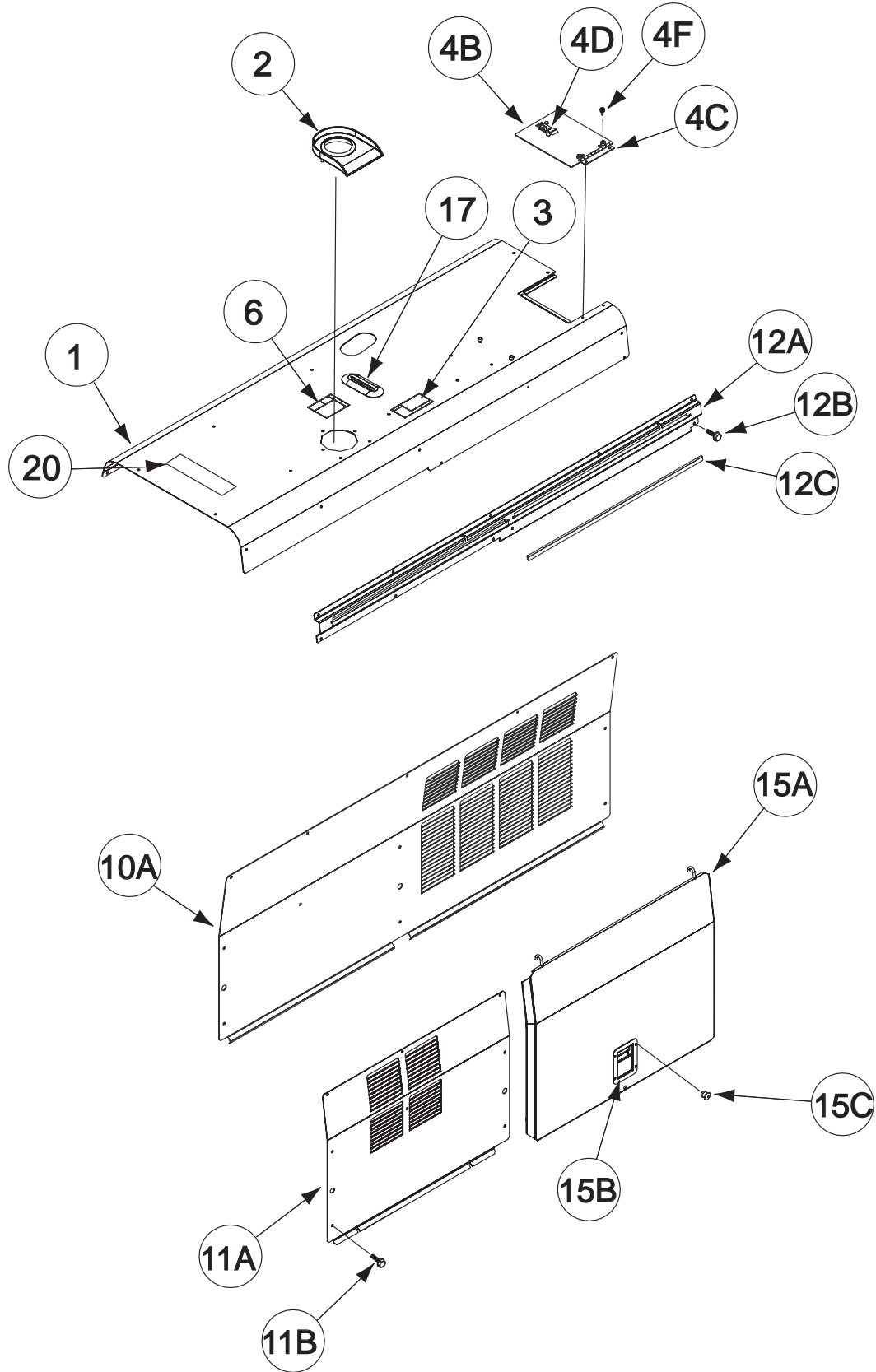
# Indicates a change this printing.

Use only the parts marked "x" in the column under the heading number called for in the model index page.

ITEM	DESCRIPTION	PART NO.	QTY.	1	2	3	4	5	6	7	8	9
1	Case Back & Radiator Asbly, Includes:	L13118-4	1	X								
1A	Case Back	G4901-1	1	X								
2A	Radiator	G3115-6	1	X								
2B	Lock Washer (Not Shown)	E106A-14	4	X								
2C	Thread Forming Screw	S9225-64	4	X								
3A	Fan Shroud	G4996-6	1	X								
3B	Thread Forming Screw	S9225-68	6	X								
7	Thread Forming Screw (Not Shown)	S9225-68	4	X								
10	Rear Nameplate (G6270-4) (Part of G6270)	<b>NSS</b>	1	X								
12	Hose Clamp (Not Shown)	S10888-16	2	X								
13A	Fan Guard	G4058-7	1	X								
13B	Thread Forming Screw (Not Shown)	S9225-68	5	X								
14A	Fan Guard	G4060-7	1	X								
14B	Thread Forming Screw (Not Shown)	S9225-68	6	X								
15A	Flex Tube (Radiator Overflow Hose) (Not Shown)	T10642-235	1	X								#
15B	Hose Clamp (Not Shown)	T13777-1	2	X								
18	Engine Service Decal	S26354	1	X								
19	Warning Decal	T13086-62	1	X								
20	Air Cleaner Service Decal (Supplied w/Air Cleaner)	<b>NSS</b>	1	X								
21	Door Bumper (Not Shown)	T14882	1	X								

Index of Sub Assemblies  
 Sub Assembly Illustration  
 Index of Sub Assemblies  
 Sub Assembly Illustration  
 Index of Sub Assemblies  
 Sub Assembly Illustration  
 Index of Sub Assemblies  
 Sub Assembly Illustration

# Enclosure Components





# Indicates a change this printing.

Use only the parts marked "x" in the column under the heading number called for in the model index page.

ITEM	DESCRIPTION	PART NO.	QTY.	1	2	3	4	5	6	7	8	9
1	Roof Assembly, Includes: Roof	L13116 G4902-1	1 1	X X	X X							
2	Fuel Trough	L12084	1	X	X							
3	Fuel Warning Decal	T13086-205	1	X	X							
4A	Radiator Cap Cover Assembly, Includes:	M20278	1	X	X							
4B	Radiator Cap Cover	S25717	1	X	X							
4C	Hinge	S21250-19	1	X	X							
4D	Latch	S24694	1	X	X							
4E	Rivet (Not Shown)	T12584-9	2	X	X							
4F	Door Bumper	T14882-1	2	X	X							
4G	Rivet (Not Shown)	T12584-6	2	X	X							
5	Door Bumper (Not Shown)	T14882-1	2	X	X							
6	Warning Decal	S25896	1	X	X							
8	Thread Forming Screw (SS) (Not Shown)	S24739-27	13	X	X							
10A	Left Case Side	G4903	1	X	X							
10B	Thread Forming Screw (SS) (Not Shown)	S24739-27	11	X	X							
11A	Right Case Side	G4904	1	X	X							
11B	Thread Forming Screw (SS)	S24739-27	7	X	X							
12A	Door Slide	L12516-1	1	X	X							
12B	Thread Forming Screw (SS)	S24739-27	12	X	X							
12C	Edge Guard	S25719-2	2	X	X							
	Door Assembly, Includes	L12514-2	1	X	X							
15A	Door	L12513-1	1	X	X							
15B	Door Latch	M20241	1	X	X							
15C	Rivet	T12584-6	4	X	X							
15D	Bumper (Not Shown)	T14882-2	2	X	X							
15E	Rivet (Not Shown)	T12584-6	2	X	X							
15F	Bumper (Not Shown)	T14882	2	X	X							
15G	Side Decal (Not Shown)	G6283	1	X	X							
17	Cover Seal	S12934-1	1	X	X							
20	CO Warning Decal	M21436	1	X	X							
21	Side Decal (On Left Case Side) (Not Shown)	G6284	1	X	X							
25	Trailer Adapter (Not Shown)	G6286-1	1	•	X							#
26	Roll Cage (End Cap) (Not Shown)	G6351	2	•	X							#
27	Roll Cage (Roof Rail) (Not Shown)	G6352	2	•	X							#
28A	Thread Forming Screw (Not Shown)	S9225-22	8	•	X							#
28B	3/8 Plain Washer (Not Shown)	S9262-120	16	•	X							#
28C	5/16 Plain Washer (Not Shown)	S9262-30	8	•	X							#
28D	3/8-16 HN (Not Shown)	CF000067	8	•	X							#
28E	3/8-16 x 2.00 HHCS (Not Shown)	CF000071	8	•	X							#
28F	3/8 Lock Washer (Not Shown)	E106A-16	8	•	X							#
28G	5/16 Lock Washer (Not Shown)	E106A-3	8	•	X							#

Index of Sub Assemblies  
 Sub Assembly Illustration  
 Index of Sub Assemblies  
 Sub Assembly Illustration  
 Index of Sub Assemblies  
 Sub Assembly Illustration  
 Index of Sub Assemblies  
 Sub Assembly Illustration

# NOTES

---

Index of Sub Assemblies

Index of Sub Assemblies

Index of Sub Assemblies

Index of Sub Assemblies

**DX450 RED-D-ARC**

**Red-D-Arc  
Weiderentals.**