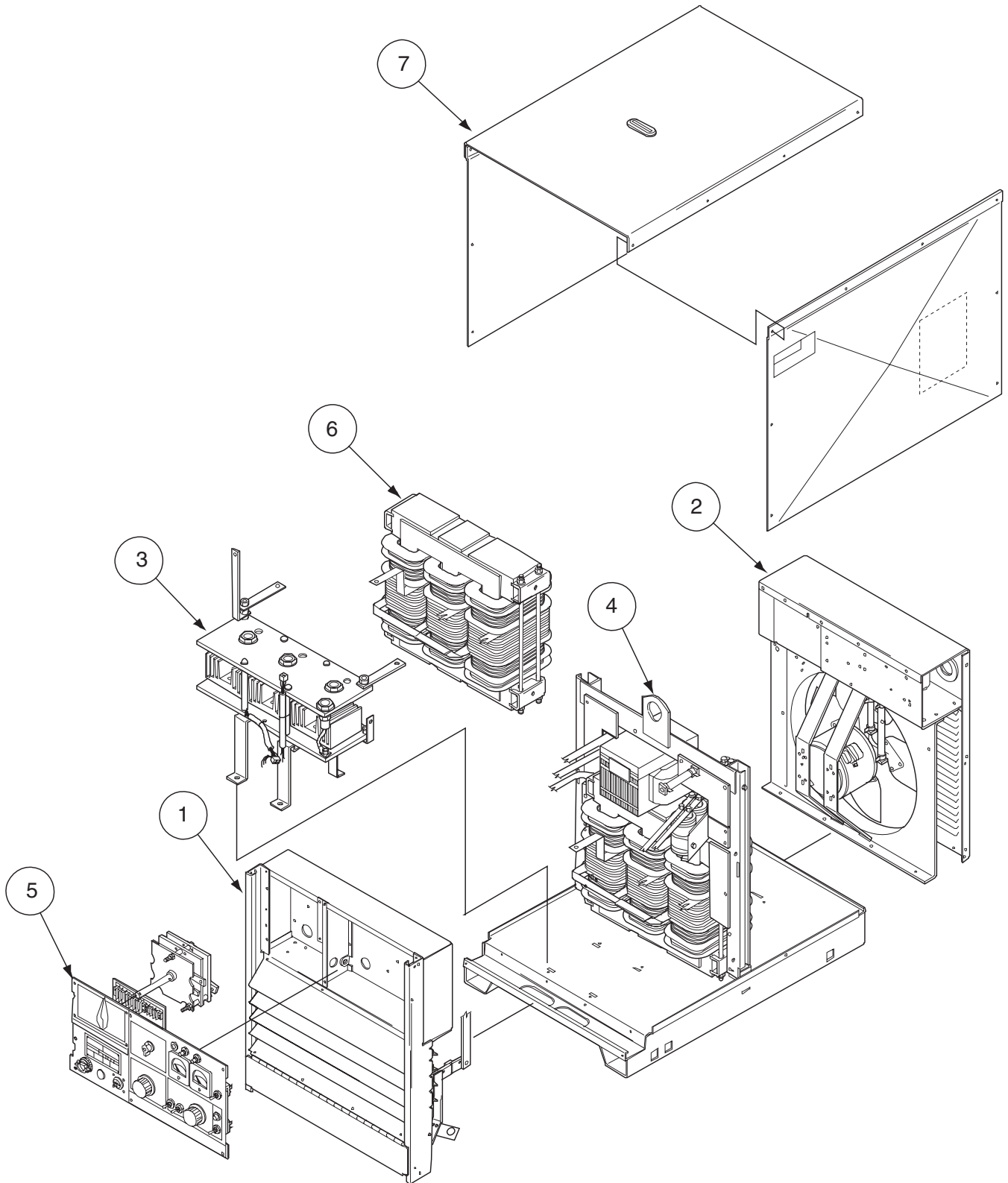


PARTS LIST FOR
RED-D-ARC
DC-400

ILLUSTRATION OF SUB-ASSEMBLIES



RED-D-ARC DC-400 For Codes: 9850MSST to 11128

Do Not use this Parts List for a machine if its code number is not listed. Contact the Service Department for any code numbers not listed.

Use the Illustration of Sub-Assemblies page and the table below to determine which sub assembly page and column the desired part is located on for your particular code machine.

Sub Assembly Item No. 			1	2	3	4	5	6	7
SUB ASSEMBLY PAGE NAME 	Optional Equipment	Miscellaneous Items	Case Front Assembly	Fan Baffle & Reconnect Panel	Rectifier Bridge Assembly	Transformer & Lift Bale Assembly	Control Box Cover Assembly	Coil Assemblies	Roof & Sides
PAGE NO. 	P355-B.1	P355-B.2	P355-C	P355-D	P355-E	P355-F	P355-G	P355-H	P355-J
CODE NO. 									
10648 (230/460/575)		1	1	1	1	1	1	1	1
10699 (230/460/575)		2	2	1	1	1	2	2	1
11038 (230/460/575)		3	3	1	2	1	3	2	1
11085 (230/460/575)		3	3	1	2	1	3	2	1
11128 (230/460/575)		3	3	1	2	1	3	2	1
9850MSST (230/460/575)		4	4	1	1	1	4	1	1

RED-D-ARC DC-400 For Codes: 9850MSST to 11128

Do Not use this Parts List for a machine if its code number is not listed. Contact the Service Department for any code numbers not listed.

Use the Illustration of Sub-Assemblies page and the table below to determine which sub assembly page and column the desired part is located on for your particular code machine.

Sub Assembly Item No.									
SUB ASSEMBLY PAGE NAME	Multi-Process Switch								
PAGE NO.	P239-C								
CODE NO.									
10648 (230/460/575)	1								
10699 (230/460/575)	1								
11038 (230/460/575)	1								
11085 (230/460/575)	1								
11128 (230/460/575)	1								
9850MSST (230/460/575)	1								

NOTES

DC-400

Red-D-Arc

OPTIONAL EQUIPMENT LISTING

Miscellaneous Options Available for your machine are listed below:

Indicates a change this printing.

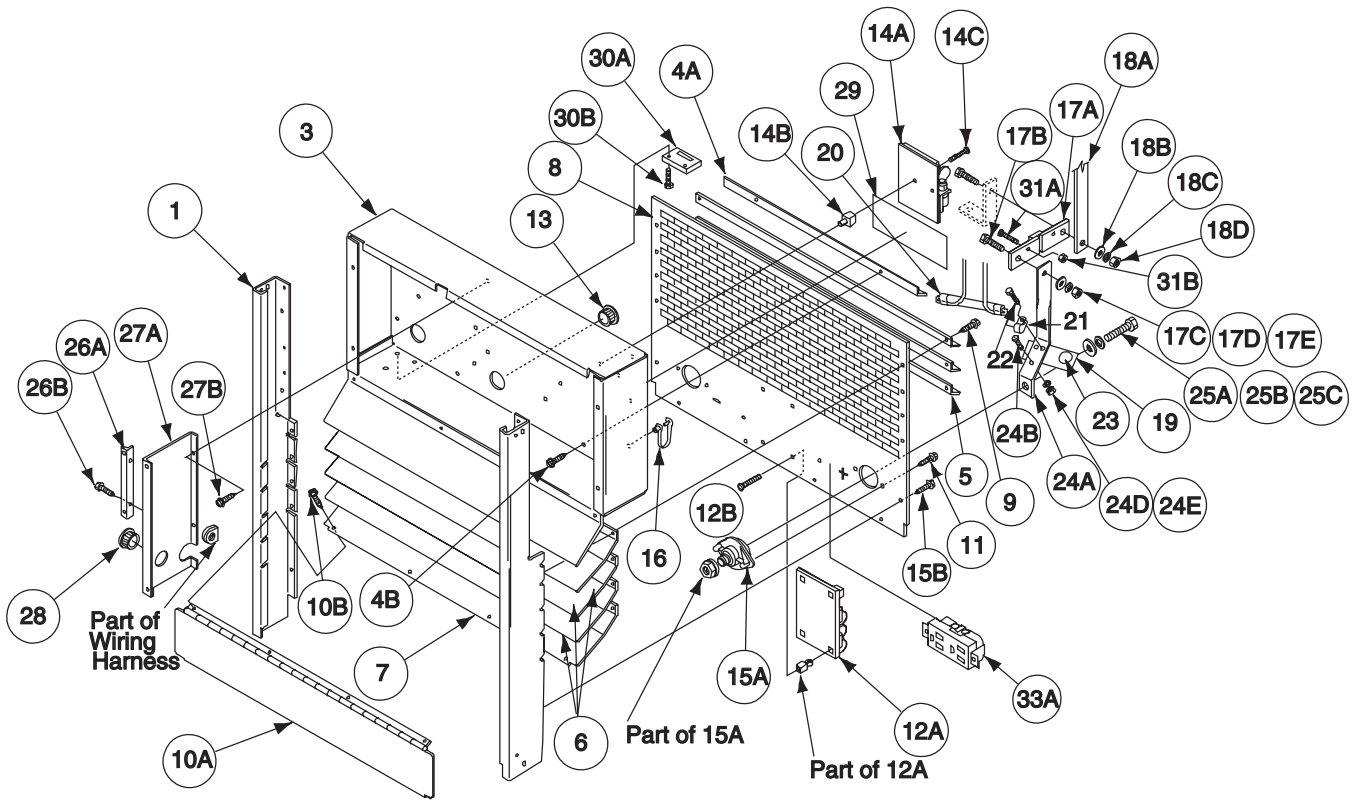
DESCRIPTION	PART NUMBER
Remote Output Control	Order K775
Hi-Freq.	Order K799
Multi-Process Switch	Order K804-1
Foot Amptrol	Order K870
Capacitor Discharge Option	Order K828-1
Undercarriage (Twin Gas Cylinder)	Order K841
Amptrol Adapter	Order K843
Water Valve Option	Order K844
Remote Output Control	Order K857
Amptrol Adapter	Order K915-1
Remote Control Adapter	Order K864
Undercarriage (3 Polyolefin Wheels)	Order K817-P
Hand Amptrol (For LA-9, LA-17 & LW-20 Tig Torches)	Order K963-1
Hand Amptrol (For LA-26 & LW-18 Tig Torches)	Order K963-1

Indicates a change this printing.

Use only the parts marked "x" in the column under the heading number called for in the model index page.

DESCRIPTION	PART NO.	QTY.	1	2	3	4	5	6	7	8	9
Ground Decal	T13259	1	X	X	X	X					
Ground Decal	T13260-4	1	X	X	X	X					
Identification Sticker (1CR)	T14798-1	1	X	X	X	X					
Connection Diagram (230/460/575)	M15666-1	1	X	X	X	X					
Wiring Diagram (230/460/575 Only)	L9107	1	X	•	•	X					
Wiring Diagram (230/460/575 Only)	L11460	1	•	X	•	•					
Wiring Diagram (230/460/575 Only)	L12058	1	•	•	X	•					
Rating Plate	S21154	1	X	•	•	X					
Rating Plate	S21154-3	1	•	X	X	•					
Mode Switch Jumper	M13607-12	1	X	X	•	X					
Power Harness	A479	1	X	•	•	X					
Power Harness	A498	1	•	X	X	•					
<p>NA - Not Available</p>											

Case Front Assembly



Indicates a change this printing.

Use only the parts marked "x" in the column under the heading number called for in the model index page.

ITEM	DESCRIPTION	PART NO.	QTY.	1	2	3	4	5	6	7	8	9
1	Case Front Welded Assembly	L7521-7	1	•	X	•	•	#				
1	Case Front Welded Assembly	L7521-5	1	X	•	•	•					
1	Case Front Welded Assembly	L7521-13	1	•	•	X	•					
1	Case Front Welded Assembly	L7521-4	1	•	•	•	X					
3	Control Box	L7510-1B	1	X	X	•	•					
3	Control Box	L7510-2	1	•	•	X	•					
3	Control Box	L7510-1	1	•	•	•	X					
4A	Air Deflector	S18375	1	X	X	X	X					
4B	Self Tapping Screw	S8025-91	2	X	X	X	X					
5	Air Deflector	S17353	3	X	X	X	X					
6	Louver	M15391-2	3	•	•	•	X					
6	Louver	M15391-4	3	X	X	X	•					
7	Louver	M15391-3	1	•	•	•	X					
7	Louver	M15391-5	1	X	X	X	•					
8	Output Panel	M15393	1	X	•	•	X					
8	Output Panel	M19603	1	•	X	X	•					
9	Self Tapping Screw	S8025-91	12	X	X	X	X					
10A	Output Stud Cover Assembly	M17097	1	•	•	•	X					
10A	Output Stud Cover Assembly	M17097-1	1	X	X	X	•					
10B	Self Tapping screw	S8025-92	4	X	X	X	X					
11	Self Tapping Screw	S8025-92	2	X	•	•	•					
11	Self Tapping Screw	S8025-92	4	•	X	X	X					
11A	Rubber Channel (Not Shown)	T11019-13	1	•	X	X	•					
12A	Snubber P.C. Board	M15370-[]	1	X	X	X	X					
12B	Self Tapping Screw	S8025-97	4	X	X	X	X					
13	Universal Bushing	T14614-1	1	X	X	X	X					
14A	Starting P.C. Board	M14520-[]	1	X	X	X	X					
14B	Expansion Nut	S14020-3	2	X	X	X	X					
14C	Self Tapping Screw	S8025-15	2	X	X	X	X					
15A	Output Terminal Assembly	T14166-9	2	X	X	X	X					
15B	Self Tapping Screw	S8025-91	4	X	X	X	X					
16	Cable Hanger	T13496-2	3	X	X	X	X					
17A	Shunt	S6602-25	1	X	X	X	X					
17B	3/8-16 x 1.25 Hex Head Cap Screw	CF000105	1	X	X	X	X					
17C	Plain Washer	S9262-4	1	X	X	X	X					
17D	Lock Washer	E106A-16	1	X	X	X	X					
17E	3/8-16 Hex Nut	CF000067	1	X	X	X	X					
18A	Lead (Mode Switch to Negative Terminal)	M13607-10	1	X	X	X	X					
18B	Plain Washer (Not Shown)	S9262-30	1	X	X	X	X					
18C	Lock Washer	E106A-14	1	X	X	X	X					
18D	5/16-18 Hex Nut	CF000029	1	X	X	X	X					
19	Reed Switch Plate	S11797-14	1	X	X	X	X					
20	Reed Switch Assembly	S12334-50	1	X	X	X	X					
21	Clamp	T8970-17	2	X	X	X	X					
22	Self Tapping Screw	S8025-76	2	X	X	X	X					
23	Marker (CR3)	T14798-3	1	X	X	X	X					
24A	Lead (Shunt to Positive Terminal) (With Multi-Process Switch)	M16549	1	X	X	X	X					
24B	3/8-16 x 1.00 Hex Head Cap Screw	CF000019	1	X	X	X	X					
24C	Plain Washer (Not Shown)	S9262-4	1	X	X	X	X					
24D	Lock Washer	E106A-16	1	X	X	X	X					

Indicates a change this printing.

Use only the parts marked "x" in the column under the heading number called for in the model index page.

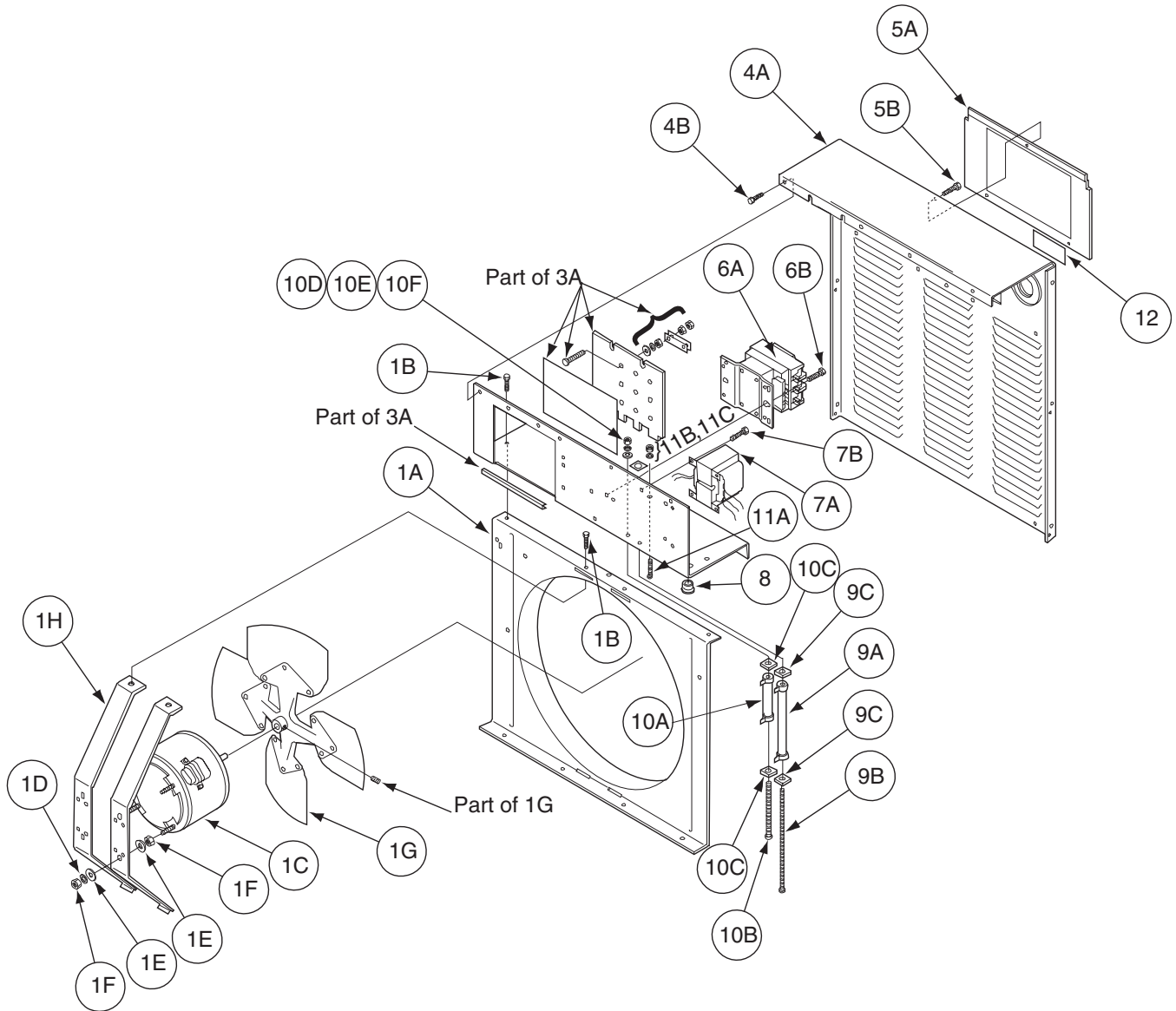
ITEM	DESCRIPTION	PART NO.	QTY.	1	2	3	4	5	6	7	8	9
24E	3/8-16 Hex Nut	CF000067	1	X	X	X	X					
25A	1/2-13 x .75 Hex Head Cap Screw	CF000020	2	X	X	X	X					
25B	Plain Washer	S9262-1	2	X	X	X	X					
25C	Lock Washer	E106A-15	2	X	X	X	X					
26A	Support Bracket	S20738	1	X	X	X	X					
26B	Self Tapping Screw	S8025-92	2	X	X	X	X					
27A	Control Box Divider	S20739	1	X	X	X	X					
27B	Self Tapping Screw	S8025-91	2	X	X	X	X					
28	Universal Bushing	T14614-3	1	X	X	X	X					
29	Caution Decal	S13504	1	X	X	X	X					
30A	Lead Insulating Panel	S14585-2	1	X	X	X	X					
30B	Self Tapping Screw	S8025-91	2	X	X	X	X					
31A	Sems Screw	T10082-4	2	X	X	X	X					
31B	Hex Nut	#10-24	2	X	X	X	X					
32	Capacitor Assembly (Not Shown)	T14824	1	X	X	X	X					
33A	Receptacle	S20467-1	1	•	X	X	•					
33B	Thread Forming Screw (Not Shown)	S9225-63	2	•	X	X	•					
33C	#10-24 Speed Nut (Not Shown)	T11525-1	2	•	X	X	•					
33D	Receptacle Gasket (Not Shown)	S21088	1	•	•	X	•					
33E	Receptacle Cover (Not Shown)	M16996	1	•	•	X	•					

NOTES

DC-400

Red-D-Arc

Fan Baffle & Reconnect Panel



Indicates a change this printing.

Use only the parts marked "x" in the column under the heading number called for in the model index page.

ITEM	DESCRIPTION	PART NO.	QTY.	1	2	3	4	5	6	7	8	9
1	Fan Baffle Assembly, Includes:	M16526-3	1	X								
1A	Fan Baffle	L6247 ø	1	X								
1B	Self Tapping Screw	S8025-91	9	X								
1C	Fan Motor	M9983-6	1	X								
1E	Plain Washer	S9262-27	4	X								
1F	#10-32 Hex Nut (or)	CF000011	4	X								
1F	#8-32 Hex Nut	CF000042	4	X								
1G	Fan	M6819-9	1	X								
1H	Fan Motor Mounting Bracket	M16525	2	X								
1J	Self Tapping Screw (Not Shown)	S8025-91	2	X								
2	Input Box Assembly (Not Shown)	S17978-1	1	X								
3A	Reconnect Panel Assembly, Includes: (230/460/575)	L7219-6	1	X								
	Reconnect Panel	M15002-3	1	X								
	Brass Hex Nut	1/4-20	9	X								
	Heavy Hex nut	T10940-5	3	X								
	E2521/1-.010-5.13-7.20	CI000620	1	X								
	Grommet Strip	T12823-13	1	X								
	E2521/1-.010-5.13-7.20	CI000620	1	X								
3B	Self Tapping Screw (Not Shown)	S8025-91	2	X								
4A	Rear Panel (Above Code 10000)	S16816-11	1	X								
4A	Rear Panel (Code 9850MSST only)	NA										
4B	Self Tapping Screw	S8025-91	12	X								
5A	Input Access Door	M13998-4	1	X								
5B	Self Tapping Screw	S8025-91	3	X								
6A	Contactor	M12161-80	1	X								
6B	Self Tapping Screw	S8025-91	3	X								
7A	Control Transformer	M12390-67	1	X								
7B	Self Tapping Screw	S8025-91	3	X								
8	Bushing	T12380-2	1	X								
9A	Resistor (R2)	S10404-95	1	X								
9B	#10-24 x 7.50 Round Head Screw	CF000191	1	X								
9C	Insulating Washer	T4479-A	2	X								
9D	Lock Washer (Not Shown)	E106A-1	1	X								
9E	Plain Washer (Not Shown)	S9262-27	1	X								
9F	#10-24 Hex Nut (Not Shown)	CF000010	1	X								
10A	Resistor (R3)	S10404-94	1	X								
10B	#10-24 x 5.00 Round Head Screw	CF000045	1	X								
10C	Insulating Washer	T4479-A	2	X								
10D	Lock Washer	E106A-1	1	X								
10E	Plain Washer	S9262-27	1	X								
10F	#10-24 Hex Nut	CF000010	1	X								
11A	Thread Forming Screw	S9225-36	2	X								
11B	Lock Washer	T9695-1	2	X								
11C	#10-24 Hex Nut	CF000010	2	X								
12	Ground Decal	T13259	1	X								

NA - Not Available

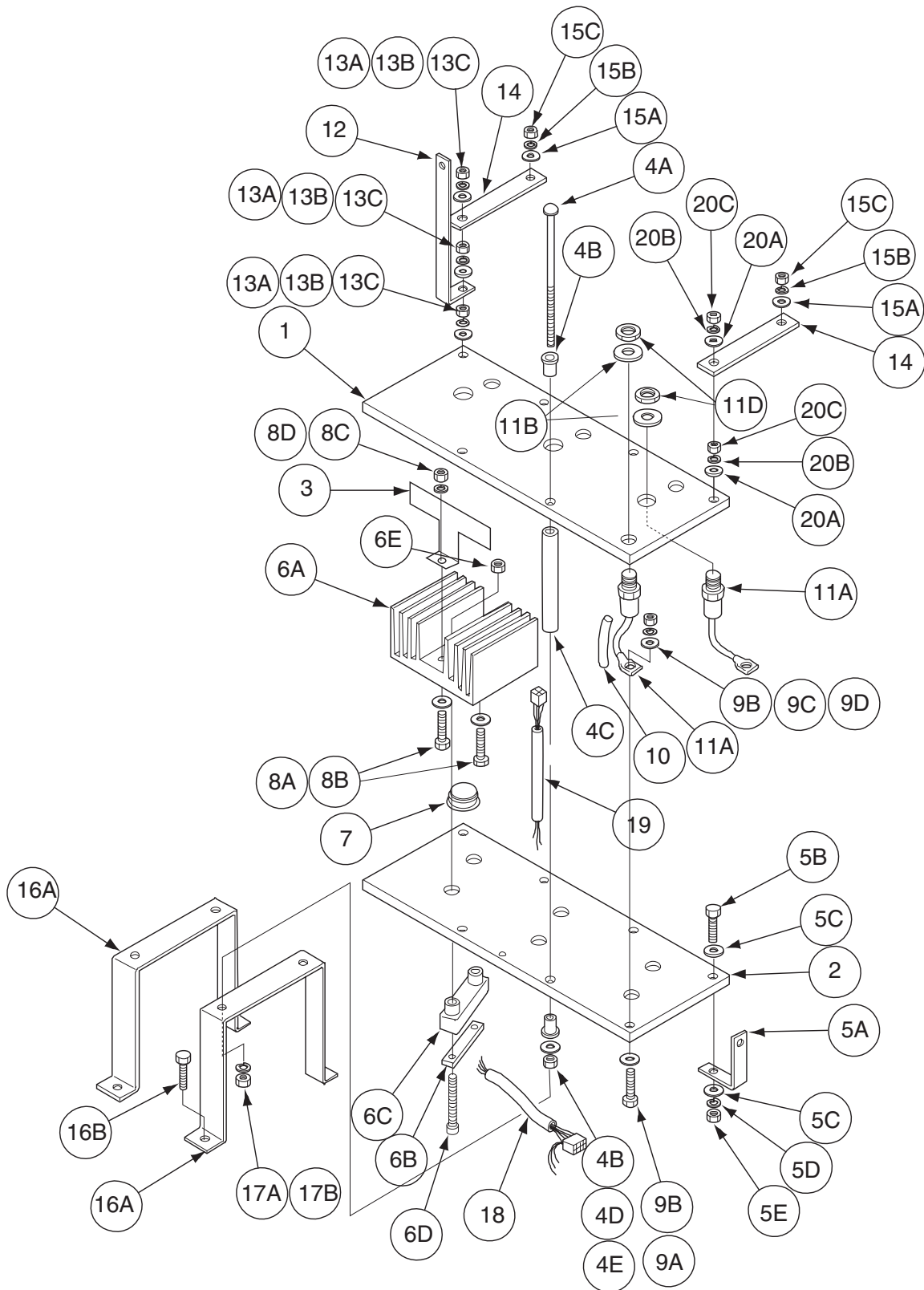
DC-400

03-17-2004

ø This part is obsolete and no longer available

Red-D-Arc

Rectifier Bridge Assembly



Indicates a change this printing.

Use only the parts marked "x" in the column under the heading number called for in the model index page.

ITEM	DESCRIPTION	PART NO.	QTY.	1	2	3	4	5	6	7	8	9
	3 Phase Rectifier Bridge Assembly (Complete)	L7520	1	X	X							
1	Heat Sink (D.C. Negative)	L7519 \emptyset		X	X							
2	Heat Sink (D.C. Positive)	L7518	1	X	X							
3	Baffle	S18366	3	X	X							
4A	Carriage Bolt	T11827-31	4	X	X							
4B	Insulating Bushing	S16860	8	X	X							
4C	Insulating Tube	T7028-141	4	X	X							
4D	Plain Washer	S9262-98	4	X	X							
4E	1/4-20 Hex nut	CF000017	4	X	X							
5A	Shunt Strap	S11109-6	1	X	X							
5B	5/16-18 x 1.25 Hex Head Cap Screw	CF000028	1	X	X							
5C	Plain Washer	S9262-30	2	X	X							
5D	Lock Washer	E106A-14	1	X	X							
5E	5/16-18 Hex Nut	CF000029	1	X	X							
6A	Heat Sink	M12314-7	3	X	X							
6B	SCR Spring	S14724-A	3	X	X							
6C	SCR Clamp	S14724-B	3	X	X							
6D	Socket Head Cap Screw	T9447-35	6	X	X							
6E	1/4-28 Hex Nut	CF000198	6	X	X							
7	SCR	M12283-10	3	X	X							
8A	5/16-18 x 1.50 Hex Head Cap Screw	CF000081	3	X	X							
8B	Plain Washer	S9262-30	3	X	X							
8C	Lock Washer	E106A-14	3	X	X							
8D	5/16-18 Hex Nut	CF000029	3	X	X							
9A	5/16-18 x 1.25 Hex Head Cap Screw	CF000028	1	X	X							
9B	Plain Washer	S9262-30	2	X	X							
9C	Lock Washer	E106A-14	1	X	X							
9D	5/16-18 Hex Nut	CF000029	1	X	X							
10	E1159/B-.625-3.25 (Sleeving)	CS001110	1	X	X							
11A	Rectifier Diode	M9661-31	4	X	X							
11B	Plain Washer	S9262-30	3	X	X							
11C	Springer Washer (Not Shown)	T12735	4	X	X							
11D	5/16-18 x 1.50 Hex Head Cap Screw	CF000081	3	X	X							
12	Lead (Bridge Negative to Mode Switch)	S16954-10	1	X	X							
13A	Plain washer	S9262-30	3	X	X							
13B	Lock Washer	E106A-14	3	X	X							
13C	5/16-18 Hex nut	CF000029	3	X	X							
14	Brace	T8477-35	2	X	X							
15A	Plain Washer	S9262-120	2	X	X							
15B	Lock Washer	E106A-4	2	X	X							
15C	3/8-16 Hex nut	CF000315	2	X	X							
16A	Bridge Mounting Bracket	M16063	2	X	•							
16A	Bridge Mounting Bracket	M20175	2	•	X							
16B	Self Tapping Screw	S8025-91	4	X	X							
16C	Hex Head Cap Screw (Not Shown)	T8833-47	2	•	X							
16D	Plain Washer (Not Shown)	S9262-30	2	•	X							
16E	Lock Washer (Not Shown)	E106A-14	2	•	X							
16F	5/16-18 Hex Nut (Not Shown)	CF000029	2	•	X							

#

Indicates a change this printing.

Use only the parts marked "x" in the column under the heading number called for in the model index page.

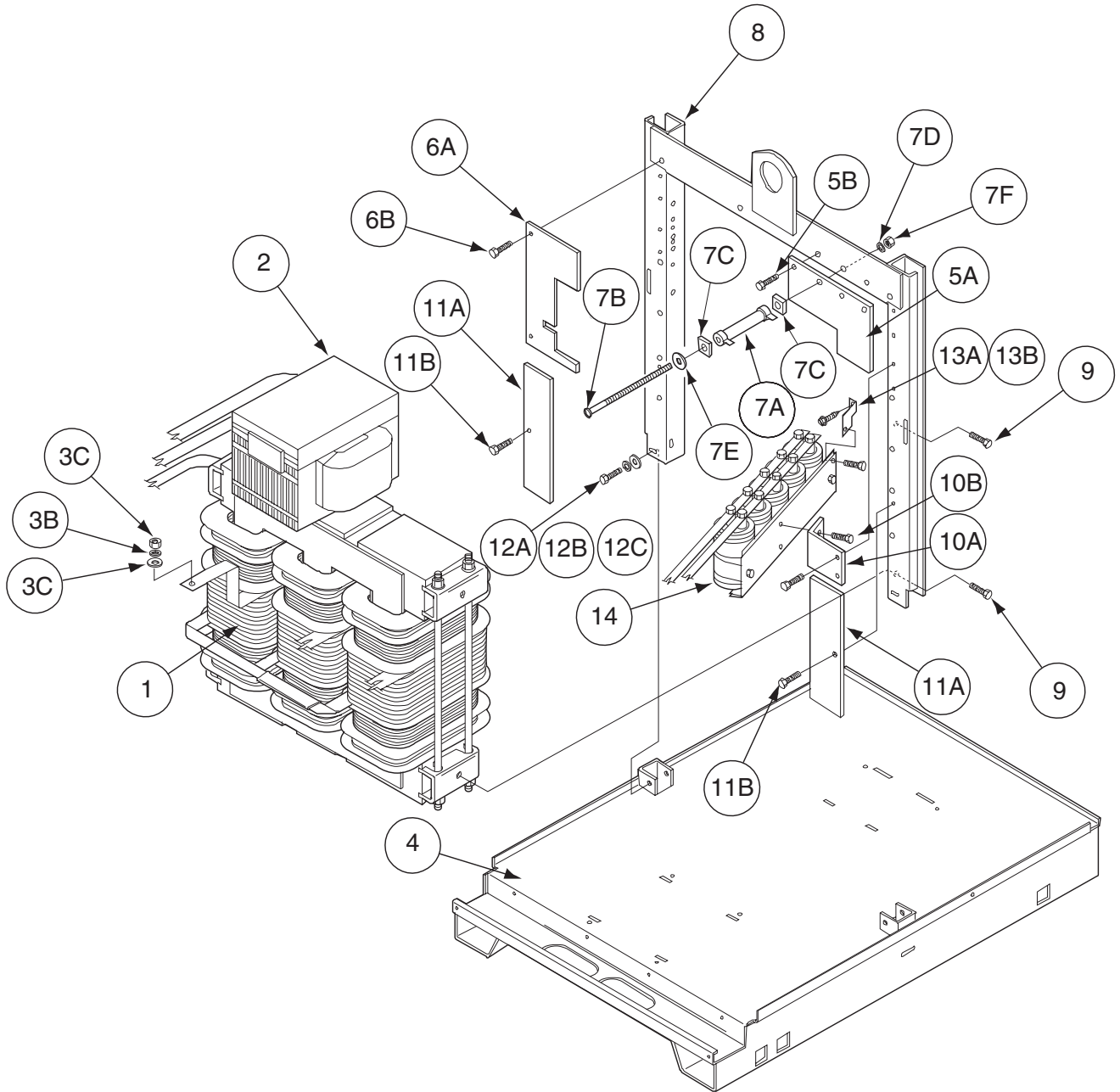
ITEM	DESCRIPTION	PART NO.	QTY.	1	2	3	4	5	6	7	8	9
17A	Lock Washer	E106A-2	4	X	X							
17B	1/4-20 Hex Nut	CF000017	4	X	X							
18	Snubber Harness	S18250-24	1	X	X							
19	SCR Gate Harness	S18250-23	1	X	X							
20A	Plain Washer	S9262-30	2	X	X							
20B	Lock Washer	E106A-14	2	X	X							
20C	5/16-18 Hex Nut	CF000029	2	X	X							

NOTES

DC-400

Red-D-Arc

Transformer & Lift Bale Assembly



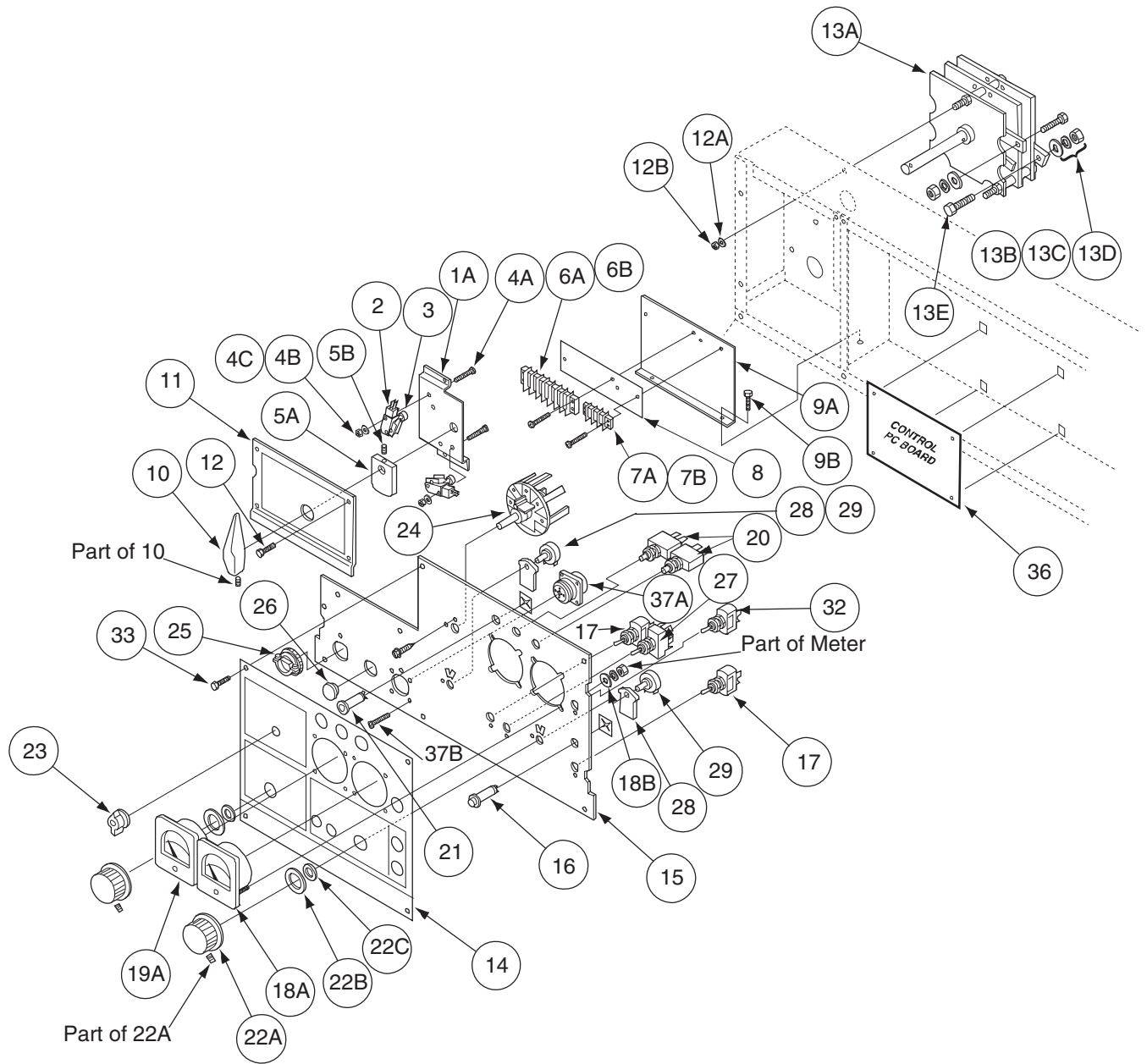
Indicates a change this printing.

Use only the parts marked "x" in the column under the heading number called for in the model index page.

ITEM	DESCRIPTION	PART NO.	QTY.	1	2	3	4	5	6	7	8	9
1	Transformer Assembly	See P-355-H										
2	Choke Coil Assembly	L7524	1	X								
3A	Plain Washer	S9262-30	1	X								
3B	Lock Washer	E106A-14	1	X								
3C	5/16-18 Hex Nut	CF000029	1	X								
4	Base Welded Assembly	L6494-2	1	X								
5A	Capacitor Baffle	S17358	1	X								
5B	Thread Forming Screw	S9225-8	1	X								
6A	Choke Baffle	S17357	1	X								
6B	Thread Forming Screw	S9225-8	2	X								
7A	Resistor (R1)	S10404-96	1	X								
7B	#10-24 x 7.50 Round Head Screw	CF000191	1	X								
7C	Insulating Washer	T4479-A	2	X								
7D	Lock Washer	E106A-1	1	X								
7E	Plain Washer	S9262-27	1	X								
7F	#10-24 Hex Nut	CF000010	1	X								
8	Lift Bale Assembly	L6485	1	X								
9	Thread Forming Screw	S9225-28	4	X								
10A	Capacitor Mounting Bracket	S17355	1	X								
10B	Thread Forming Screw	S9225-8	1	X								
11A	Insulation (Baffle)	T11472-24	2	X								
11B	Thread Forming Screw	S9225-8	2	X								
12A	3/8-16 x .75 Hex Head Cap Screw	CF000034	4	X								
12B	Lock Washer	E106A-16	4	X								
12C	Plain Washer	S9262-120	4	X								
13A	Capacitor Brace	S17356	1	X								
13B	Self Tapping Screw	S8025-91	2	X								
14	Capacitor Bank Assembly	M14495-1	1	X								

#

Control Box Cover Assembly



Indicates a change this printing.

Use only the parts marked "x" in the column under the heading number called for in the model index page.

ITEM	DESCRIPTION	PART NO.	QTY.	1	2	3	4	5	6	7	8	9
1	Micro Switch Assembly, Includes: (1A thru 4C)											
1A	Micro Switch Bracket	M15399	1	X	X	X	X					
2	Micro Switch	T12485-3	2	X	X	X	X					
3	Switch Actuator	T14797	2	X	X	X	X					
4A	Round Head Screw	CF000138	4	X	X	X	X					
4B	Lock Washer	E106A-17	4	X	X	X	X					
4C	Hex Nut	CF000139	4	X	X	X	X					
5A	Cam	T14799	1	X	X	X	X					
5B	Set Screw	S11604-9	1	X	X	X	X					
6A	Terminal Strip	S8542-7	1	X	X	X	X					
6B	Self Tapping Screw	S8025-15	2	X	X	X	X					
7A	Terminal Strip	S14530-12	1	X	X	X	X					
7B	Self Tapping Screw	S8025-62	2	X	X	X	X					
8	Number Plate	S18378-1	1	X	X	X	X					
9A	Terminal Strip Bracket	S17046	1	X	X	X	X					
9B	Self Tapping Screw	S8025-91	2	X	X	X	X					#
9C	Lock Washer (Not Shown)	T9695-1	2	X	X	X	X					
10	Mode Switch Handle	S16664-7	1	X	X	X	X					
11	Mode Switch Cover	S20737	1	X	X	X	X					#
12	Self Tapping Screw	S8025-91	4	X	X	X	X					
13A	Mode Switch	L3545-21	1	X	X	X	X					
13B	Plain Washer	S9262-98	3	X	X	X	X					
13C	Lock Washer	T9860-6	3	X	X	X	X					
13D	1/4-20 Hex Nut	CF000017	3	X	X	X	X					
13E	Hex Head Bolt	5/16-18 x 1.00	3	X	X	X	X					
13F	Mode Switch Nameplate (Not Shown)	M17001	1	•	•	X	•					
14	Nameplate	M19328	1	X	•	•	•					
14	Nameplate	M19853	1	•	X	•	•					
14	Nameplate	M19377	1	•	•	X	•					
14	Nameplate	L9024	1	•	•	•	X					
15	Control Box Cover	L9104-4	1	X	•	•	•					
15	Control Box Cover	M19856	1	•	X	X	•					
15	Control Box Cover	L9104-1	1	•	•	•	X					
16	Pilot Light	T13486-1	1	X	X	X	X					
17	Switch (S1, S3)	T10800-4	2	X	X	X	X					
18A	D.C. Voltmeter	M10486-3	1	X	X	X	X					
18B	Plain Washer	S9262-39	4	X	X	X	X					
19A	D.C. Ammeter	M10485-8	1	X	X	X	X					
19B	Plain Washer (Not Shown)	S9262-39	4	X	X	X	X					
20	Circuit Breaker	T12287-20	2	X	X	•	X					
20	Circuit Breaker	T12287-20	1	•	•	X	•					
21	Thermal Protection Light	T13534-11	1	X	X	X	X					
22A	Knob	T10491-1	2	X	X	X	X					
22B	Felt Washer	T14034	2	X	X	X	X					
22C	Insulation Tube	T7028-241	2	X	X	X	X					
23	Knob	M15796	1	X	X	X	X					
24A	Arc Control Switch (S5)	M15750-1	1	X	X	X	X					
24B	Self Tapping Screw (Not Shown)	S8025-77	1	X	X	X	X					
25	Box Connector	T9639-1	1	X	X	X	X					
26	Plug Button	T13597-1	1	X	•	X	X					
27	Switch (S2)	T10800-39	1	X	X	X	X					

Indicates a change this printing.

Use only the parts marked "x" in the column under the heading number called for in the model index page.

ITEM	DESCRIPTION	PART NO.	QTY.	1	2	3	4	5	6	7	8	9
28	Potentiometer Spacer	S18280	2	X	X	X	X					
29	Potentiometer (R4, R5)	T10812-40	1	X	X	X	X					
30	Control Harness (Not Shown)	L9103	1	X	X	X	X					
32	Voltmeter Switch (S6)	T13562	1	X	X	X	X					
33	Self Tapping Screw	S8025-91	7	X	X	X	X					
34	Circuit Breaker (Depending on Code)(Not Shown)	T12287-34	1	•	X	X	•					
36	Control P.C. Board	G2588-[]	1	X	X	X	X					
37A	Connector Lead Assembly	S13100-144	1	X	X	X	X					
37B	Self Tapping Screw	S8025-73	4	X	X	X	X					
38	Door (Not Shown)	S25242	1	•	X	X	•					
38A	Thread Forming Screw (Not Shown)	S9225-61	1	•	X	X	•					
38B	Speed Grip Nut Retainer (Not Shown)	T10097-4	1	•	X	X	•					

#

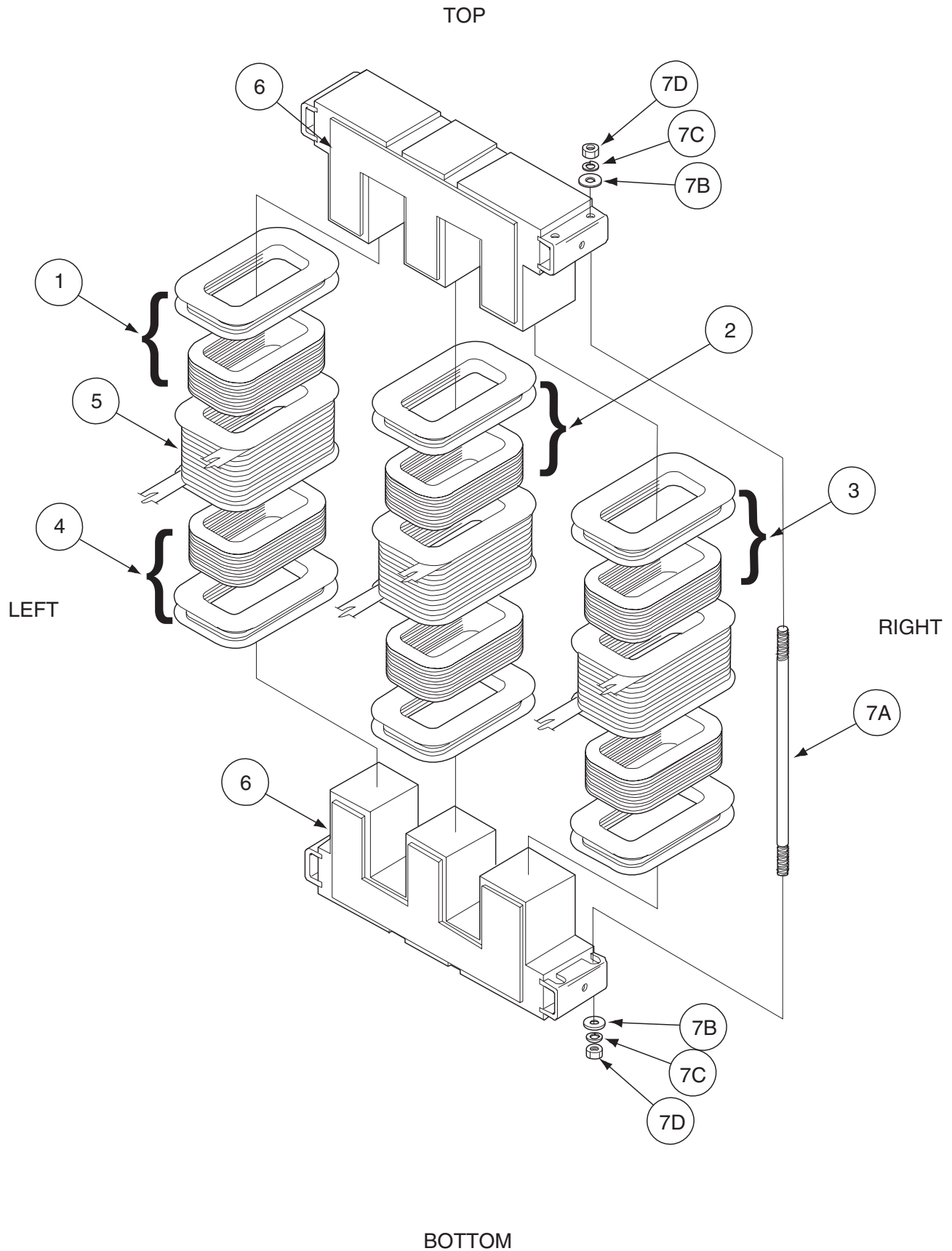
Note: When ordering new printed circuit boards indicate the dash number [] of the "Old" board that is to be replaced. This will aid Lincoln in supplying the correct and latest board along with any necessary jumpers or adapters. The dash number brackets [] have purposely been left blank so as to eliminate errors, confusion and updates.

NOTES

DC-400

Red-D-Arc

Coil Assemblies



BOTTOM

DC-400

Red-D-Arc

3-12-2001

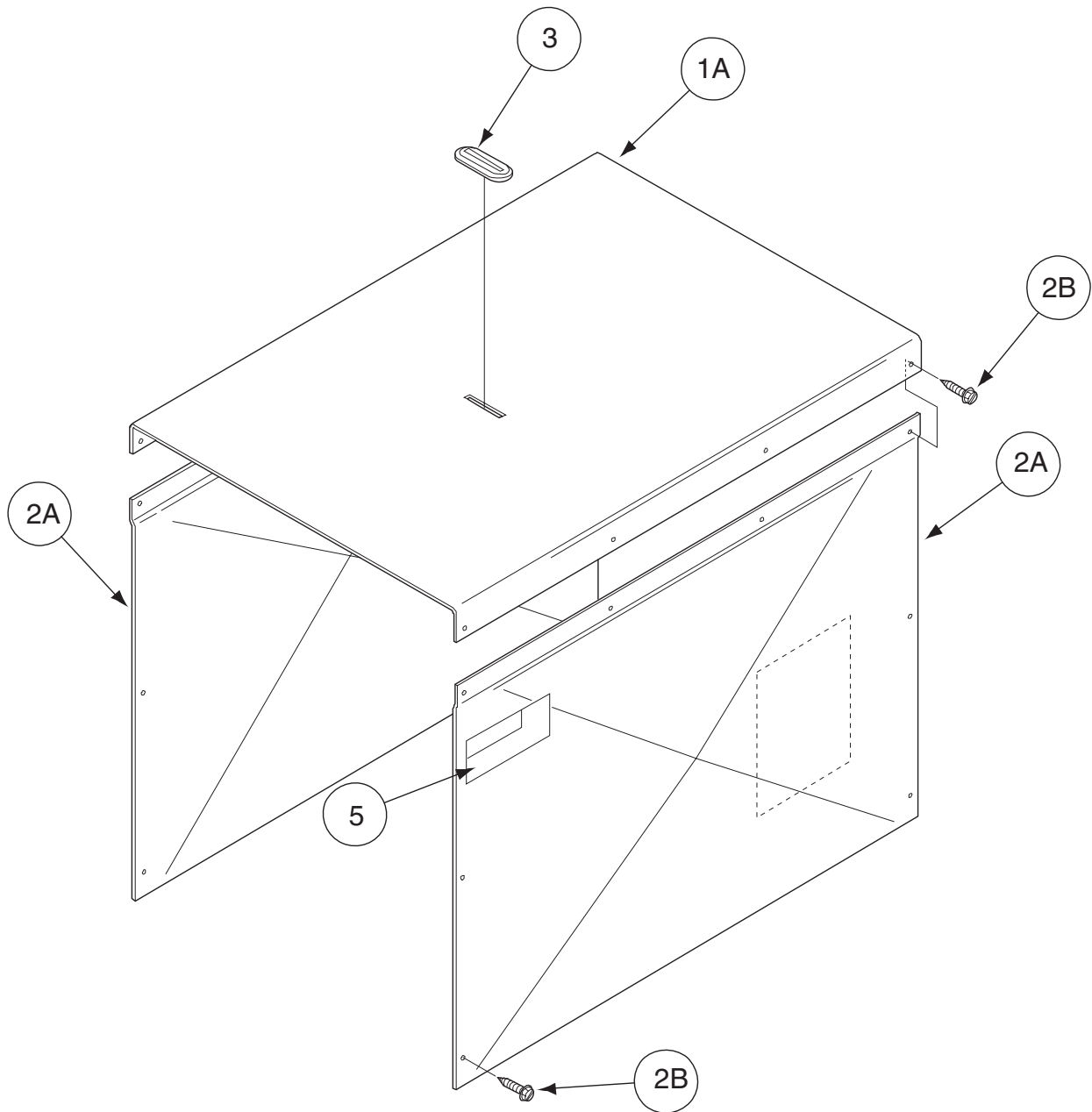
Indicates a change this printing.

Use only the parts marked "x" in the column under the heading number called for in the model index page.

ITEM	DESCRIPTION	PART NO.	QTY.	1	2	3	4	5	6	7	8	9
	Transformer Assembly (Includes: 1 thru 9)	G2589-8/10699	1	•	X							
	Transformer Assembly (Includes: 1 thru 9)	G2589-2/9850	1	X	•							
1	Primary Coil (Top/Left)	L9093-4/9850	1	X	•							
1	Primary Coil (Top/Left)	L9093-9/10699	1	•	X							
2	Primary Coil (Top/Center)	L9093-2/9850	1	X	•							
2	Primary Coil (Top/Center)	L9093-9/10699	1	•	X							
3	Primary Coil (Top/Right)	L9093-3/10699	1	•	X							
3	Primary Coil (Top/Right)	L9093-3/9850	1	X	•							
4	Primary Coil (Bottom)	L9093-1/10699	3	•	X							
4	Primary Coil (Bottom)	L9093-1/9850	3	X	•							
5	Secondary Coil Assembly	M17028	3	X	X							
6	Lamination Assembly	L6268-4	2	X	X							
7A	Stud	T9781-51	4	X	X							
7B	Plain Washer	S9262-120	4	X	X							
7C	Lock Washer	T9860-4	4	X	X							
7D	3/8-16 Hex Nut	CF000315	8	X	X							
8	Secondary Thermostat (Not Shown)	T13359-2	1	X	X							
9	Primary Thermostat (Not Shown)	T14542-1	1	X	X							

#

Roof & Sides



NOTES

DC-400

Red-D-Arc